



STARON



MATERIAL
BANK



COUTINUING
EDUCATION

staron[®]
Solid Surfaces

LOTTE CHEMICAL | CALIFORNIA INC.

6 Centerpointe Dr. Suite 300, La Palma, CA 90623, USA
LOTTE@lccalifornia.com

Copyright © 2020 LOTTE CHEMICAL Co., Ltd.
Printed in KOREA

 **LOTTE CHEMICAL**

PREMIUM SOLID SURFACES
STARON

STRETCH YOUR IMAGINATION
WITH STARON FOR INFINITE POSSIBILITIES



staron[®]
Solid Surfaces



Supreme Ocean View

STRETCH YOUR IMAGINATION WITH STARON FOR INFINITE POSSIBILITIES.

TIMELESS BEAUTY

From intricately detailed veining to lustrous muted waves

The upgraded **Supreme Collection** draws its inspiration from the timeless allure of marble, featuring the mesmerizing movements and intricate crack patterns found in nature. Each exquisite design captures the authentic colors and detailed patterns of genuine stone. Delivering an impeccably smooth surface with timeless elegance.

Experience the timeless charm of Downy Grey with deep textures and enduring design with various light performances. Downy Cream and Downy Dove embrace the touch of tranquility to your interior design with feather-like soft colors and subtle patterns.

Find the beauty and practicality in one surface for your next project.

Discover our superior surfaces in the new **Supreme Collections**.



RELIABLE PERFORMANCE

- Cutting-edge technology sets a new standard in surface
- Inconspicuous repairment available for its homogenous composition



HYGIENIC SURFACE

- Non-porous surface inhibits growth of mold or bacteria
- Resistant to heat and abrasion
- Refurbishment to a new condition available



DIMENSIONAL FLEXIBILITY

- Thermo-formable into three-dimensional shapes
- Excellent workability for unlimited design possibilities



INFINITE RANGE OF COLORS

- Over 150 color options ranging from natural to vivid
- Ongoing collaboration with color trend experts to stay commercially relevant



IMPERCEPTIBLE SEAMS

- Consistent color and texture on every sheet provides a smooth and seamless surface
- Installed without gaps, crevices, or obvious joint-lines



TRANSLUCENCY

- Creative back-lighting effects via diversified material thickness, allowing transmission from low-energy light source



GLOBAL NETWORK

- Regional branch offices and worldwide product distribution networks



RELIABLE QUALITY

- Advanced quality control policy and a commercial 10-year warranty
- Certified eco-friendly by Greenguard and Scientific Certification System

NEW
Premiere

Premiere

Inspired by the timeless beauty of natural stones, the Premiere collection captures the grace of nature. Featuring an outstanding large vein in the Calacatta style, it embodies an opulent luxury that transcends conventional vein designs.



NEW Forte VF315

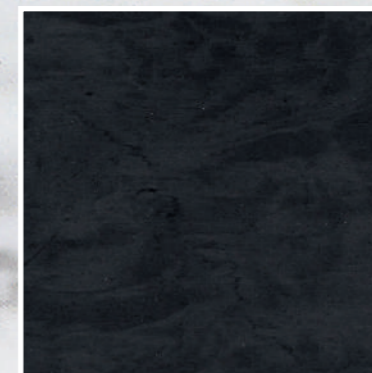


NEW Vivace VV375

Premiere

Premiere

Inspired by the timeless beauty of natural stones, the Premiere collection captures the grace of nature. Featuring an outstanding large vein in the Calacatta style, it embodies an opulent luxury that transcends conventional vein designs.



Gravita VG392



Legato VL322



Largo VL312

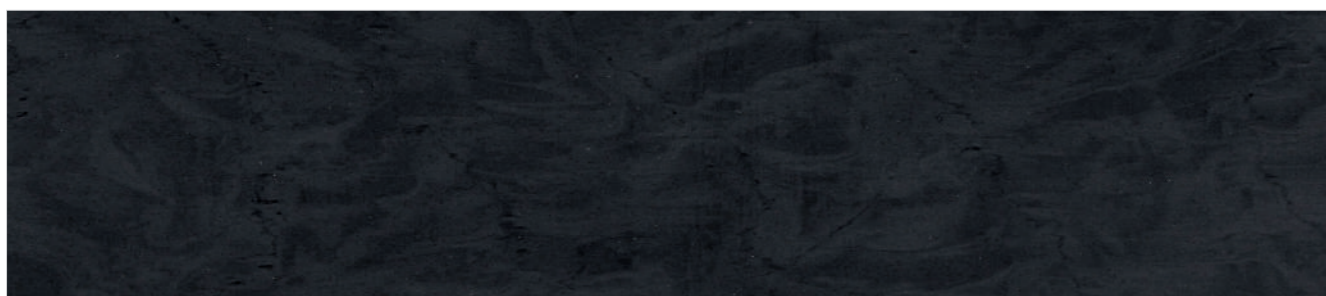
Largo



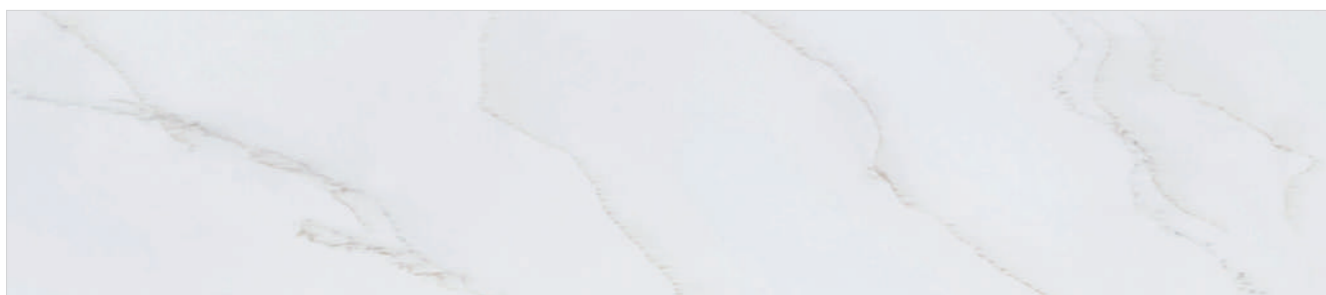
Largo VL312



Legato VL322



Gravita VG392



Forte VF315

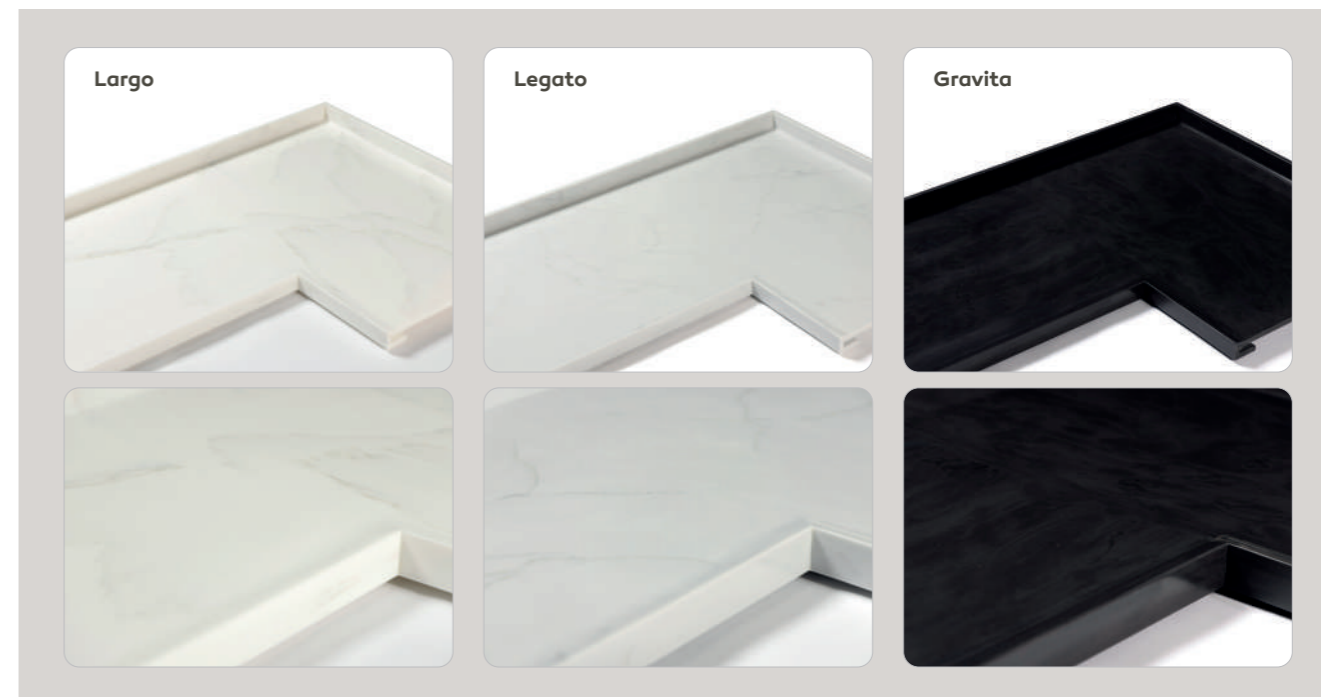


Vivace VV375

Differentiating points

Point 1. Natural Seaming

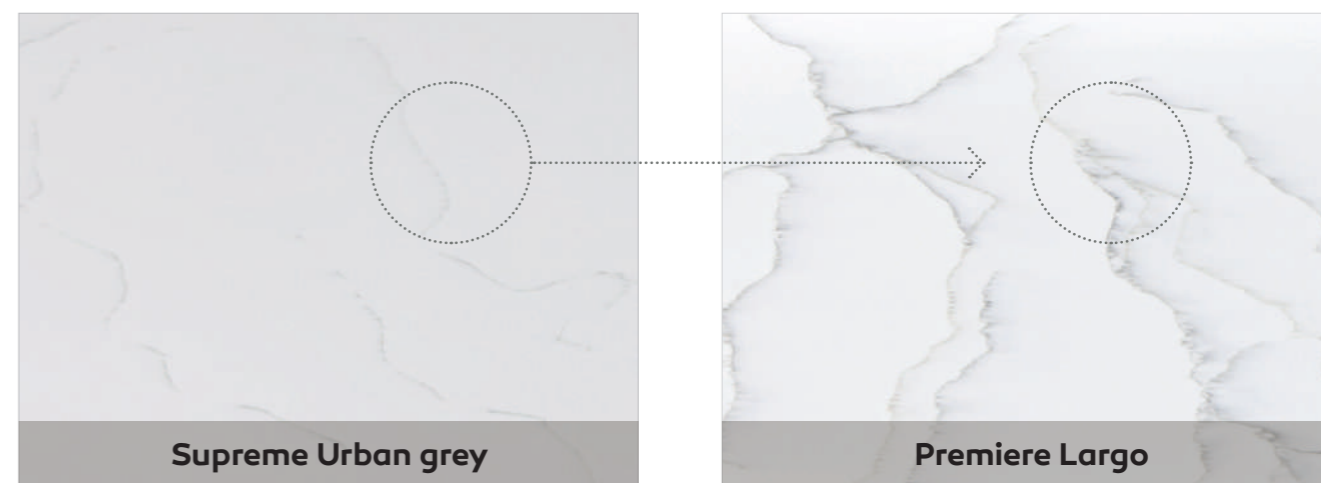
Improved the smoothness of the pattern when joining tops at 90 degrees. The abundance of veins makes the two plates look like a single piece when joined, giving them a more natural look.



Point 2. Unique technology

LOTTE's unique technology allows for the creation of natural marble pattern.

More than double the richness of vein



Differentiating points

Point 3. Create differentiated spaces

With a natural pattern on a white, cool gray, and black tone base, it's designed to be adaptable to any interior design. Different colors and darkness of patterns are applied to the dual veins to give a various look.

NEW Forte VF315



Pristine white meets warm gray and light brown veining for a look of understated elegance.



NEW Vivace VV375



A multi-toned base blending warm white, cream, and beige, enriched with graceful brown veining for added depth and character.



Largo VL312



Patterns in warm and cool tones are added to the white background to emphasize both calmness and cheerfulness.



Legato VL322



A cool gray base creates a calm yet powerful look.



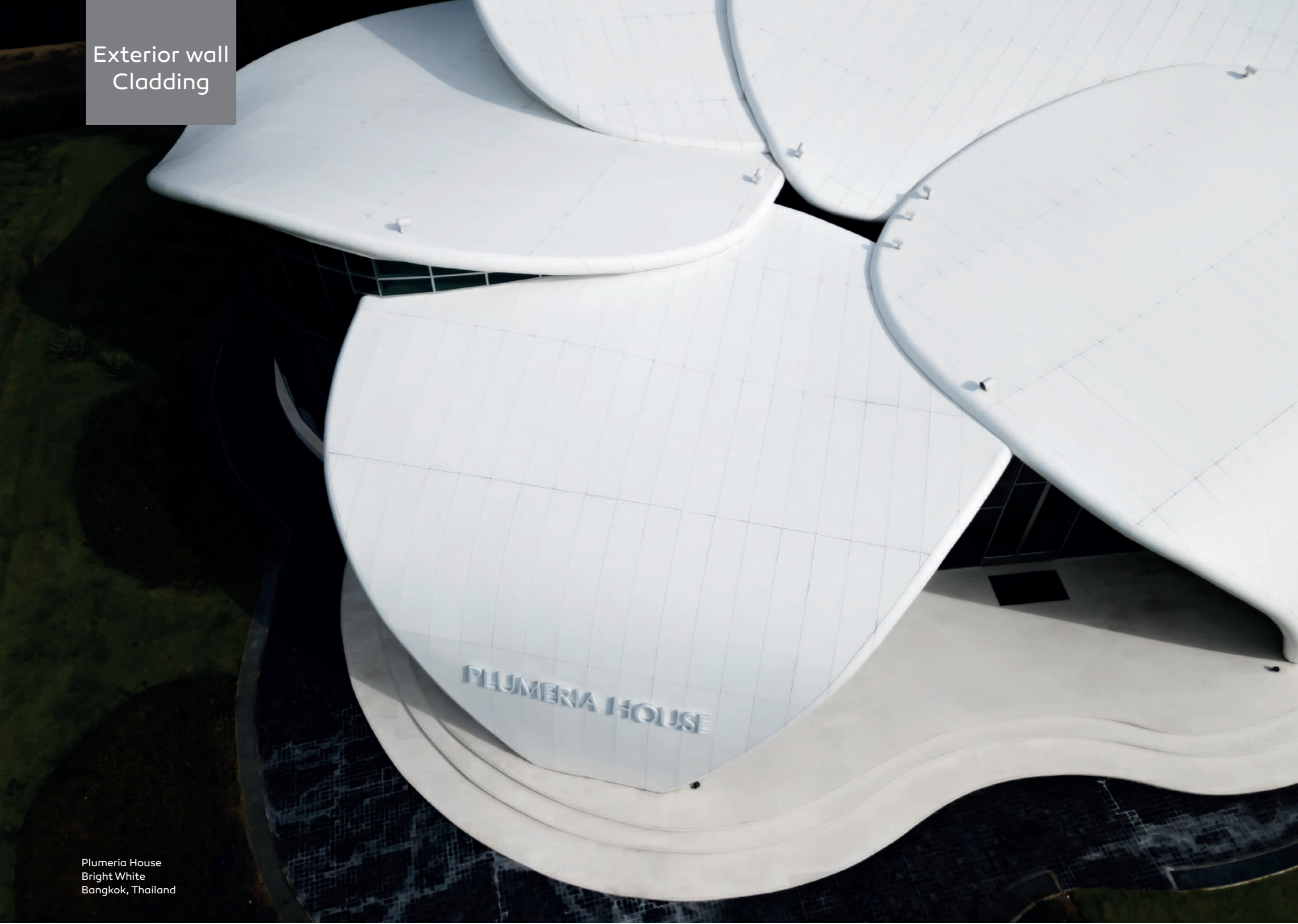
Gravita VG392



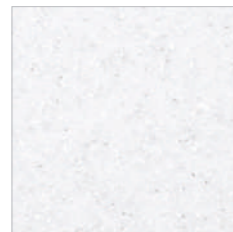
Warm-tone patterns and chips are added to the black base to emphasize the heaviness and wonder of black.



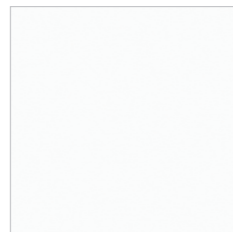
Exterior wall
Cladding



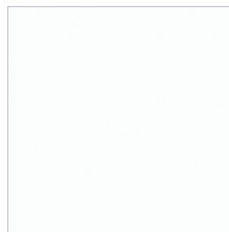
Plumeria House
Bright White
Bangkok, Thailand



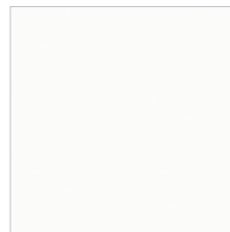
Aspen Snow
AS610



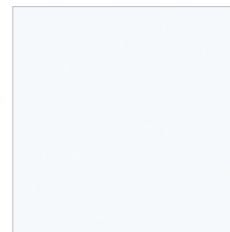
Bright White
BW010



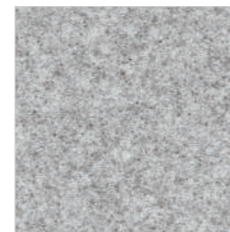
Pearl
SP011



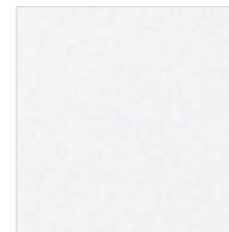
Pure white
SP016



Quasar White
SQ019



Sanded Grey
SG420



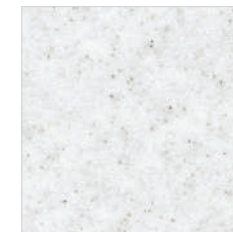
Sanded Icicle
SI414



Sanded Sahara
SS440



Sanded Vermillion
SV430

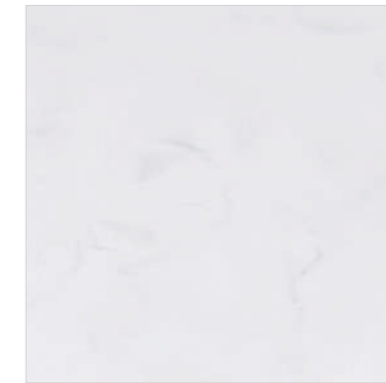


Sanded White Pepper
WP410

Supreme



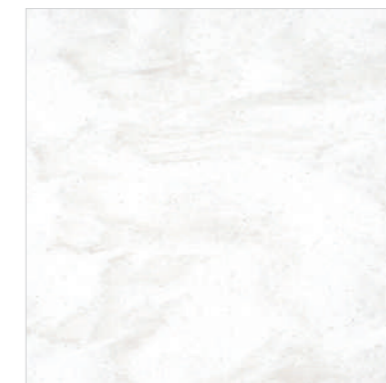
Downy Cream



Downy White SF100



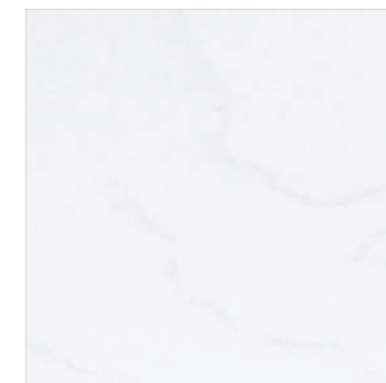
Downy Dove SP105



Downy Cream VC343



Downy Grey VG321



Cotton White VC110

Supreme



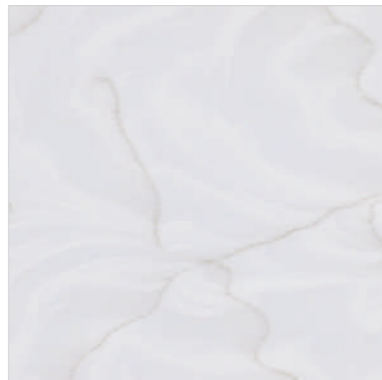
Morning Sky VM114



Delphi VD111



Arctic White VA311



Rotor Cloud VR322

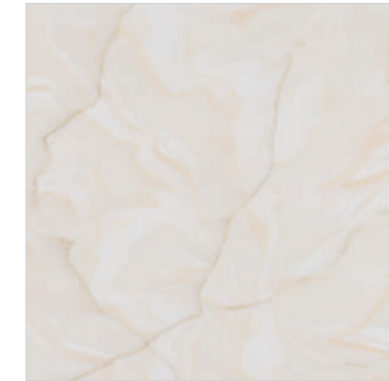
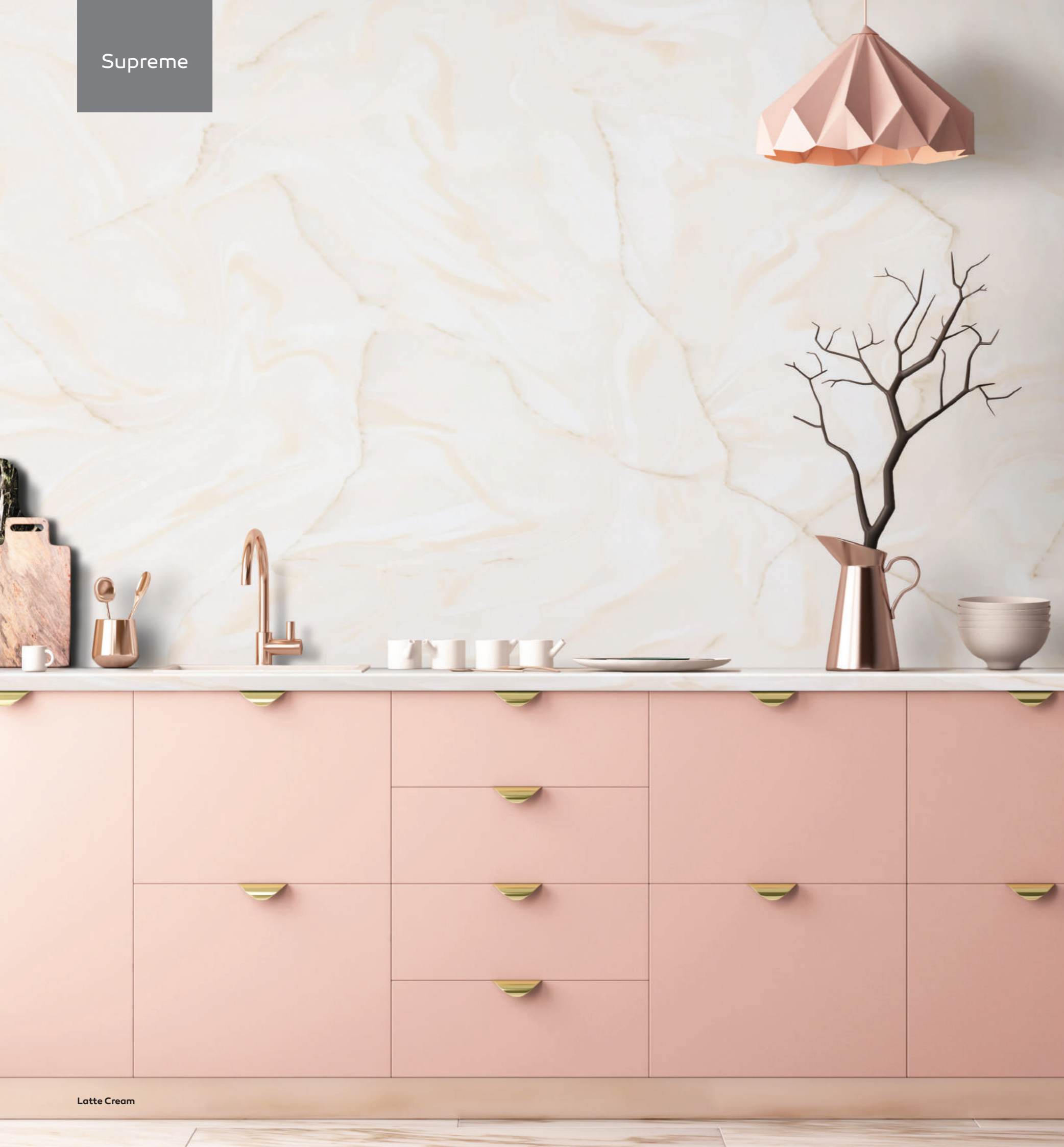


Snowfall VS324



Rotor Cloud

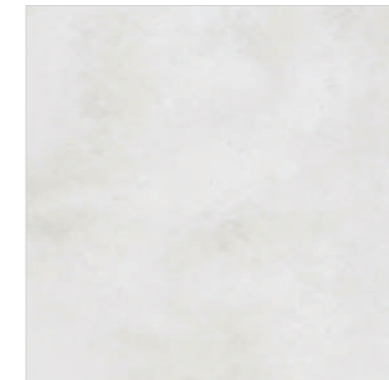
Supreme



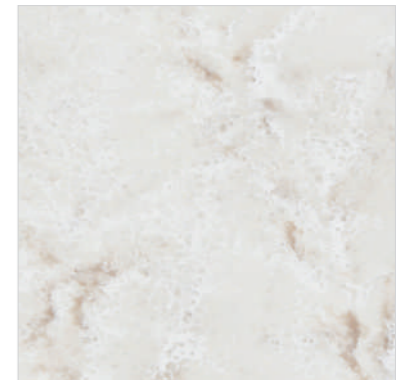
Latte Cream VL343



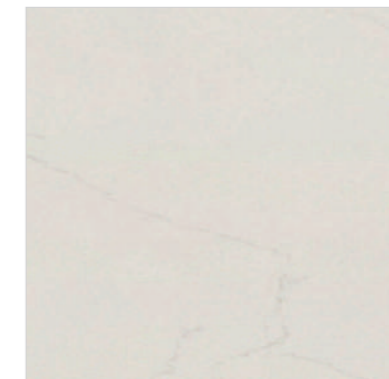
Flux VF113



Reno VR184

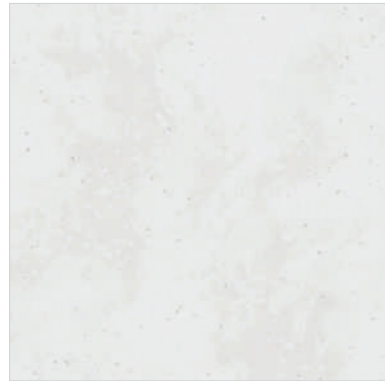


Ocean View VO171

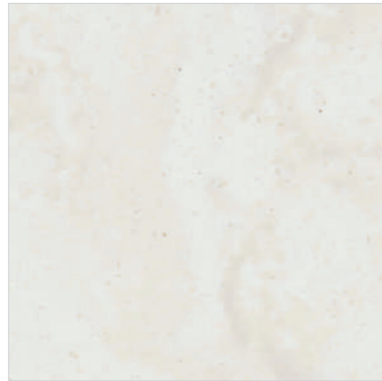


Beige Granite VB172

Supreme



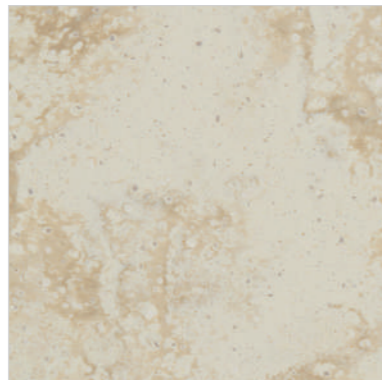
Cloudbank VC118



Magnolia VM143



Natural Bridge VN144



Dandelion VD175



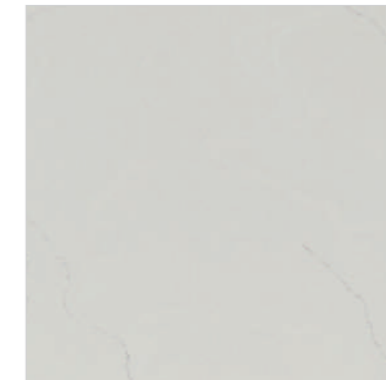
Dawn VD126



Natural Bridge



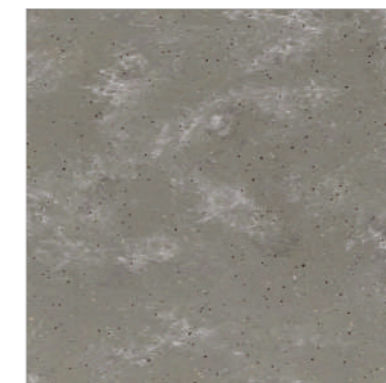
Grigio Concrete



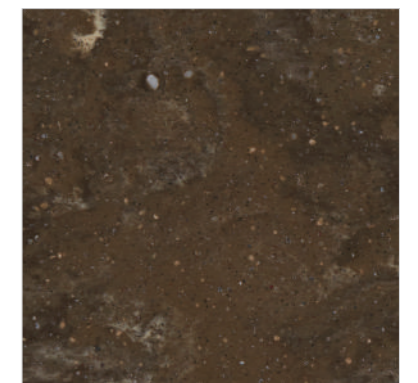
Urban Grey VU127



Ash Concrete VA129



Ashfall VA381



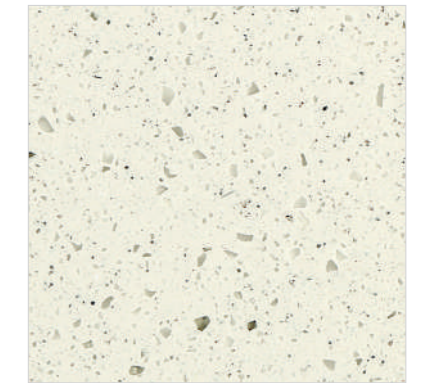
Loam VL155



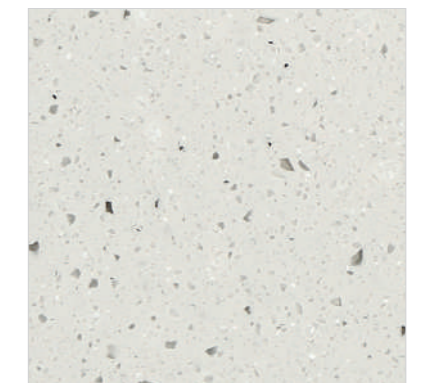
Grigio Concrete VG180

TEMPEST STELLA COLLECTION

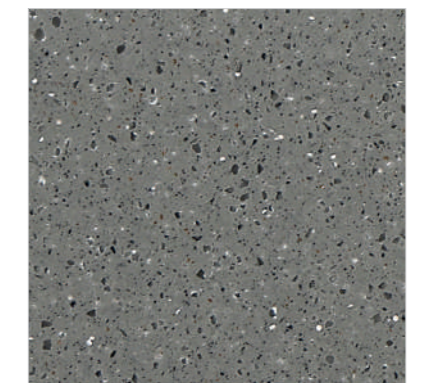
Maintaining the sophistication of Staron's Tempest collection, the Tempest Stella collection is reintroduced, blending emotive colors with luxurious allure.



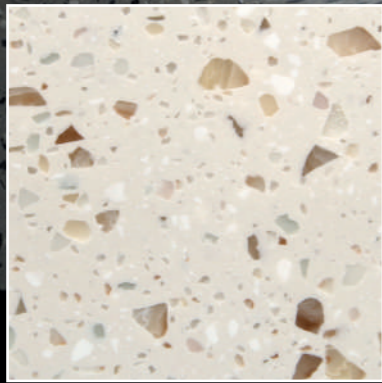
Lyra FL175



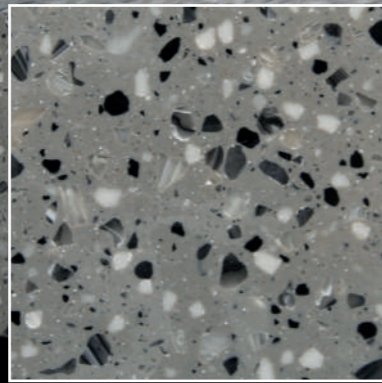
Vela FV126



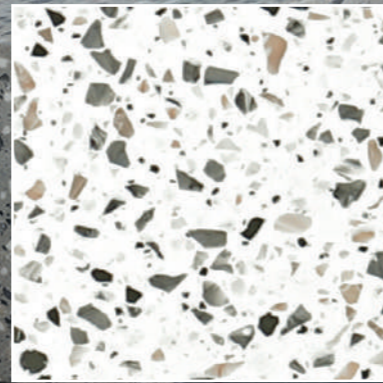
Grus FG188



Terrazzo Bologna
NT970



Terrazzo Torino
NT981

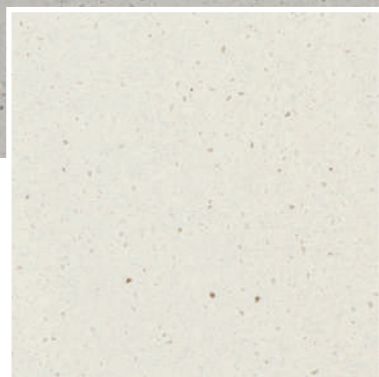


Terrazzo Venezia
NT150

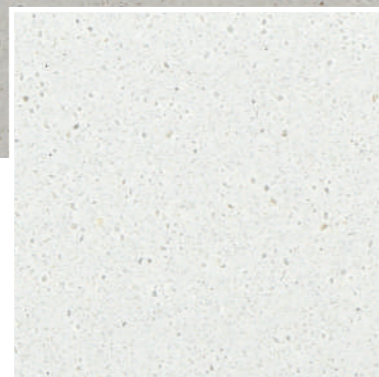
Terrazzo Torino

STUCCO COLLECTION

Introducing the Stucco Collection reinterpreted by Staron—lime, fine sand, and other elements are blended into a paste and applied for a textured wall finish, enhanced with the hues of nature.



Stucco Angora NA972



Stucco Cotton NC912



Stucco Earth NE945

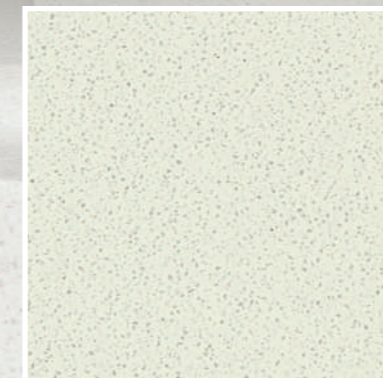
Eclipse

ECLIPSE COLLECTION

Meet the Eclipse collection that encapsulates the durability of natural stones interwoven with everyday fleeting moments, infused with a subtle shimmer of luxury.



Eclipse White SW412



Eclipse Cream SC444

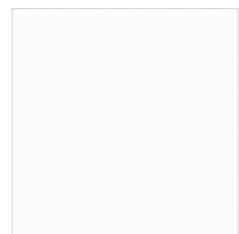


Eclipse Luna SL477

Solid



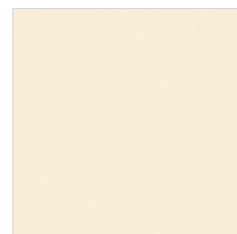
Ultramarine



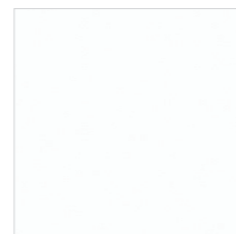
Bright White
BWO10



Forest
SFO61



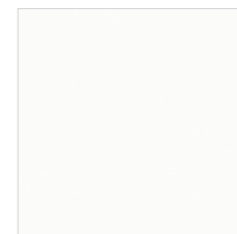
Ivory
SIO40



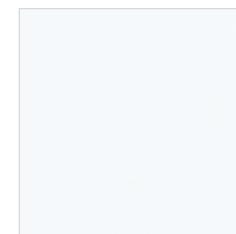
Pearl
SPO11



Piano Black
GP790



Pure white
SPO16

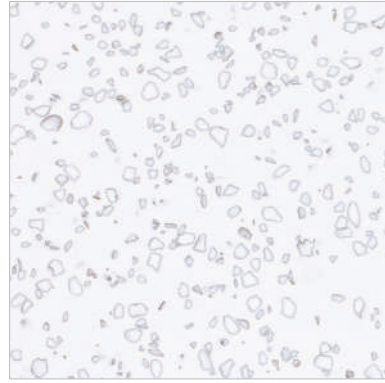


Quasar White
SQ019

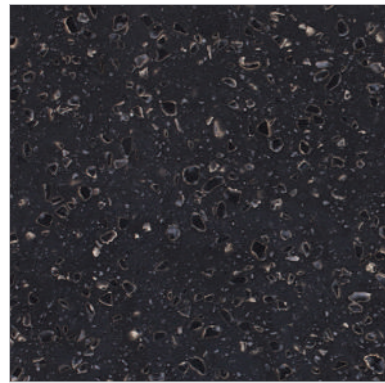


Ultramarine
SU067

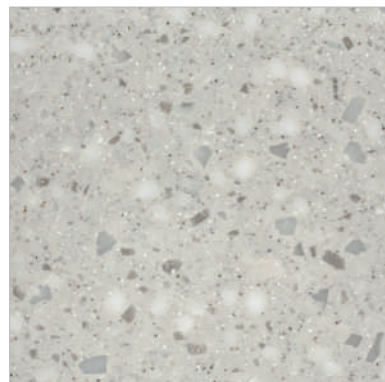
Quarry



Mosaic Dalmatian
QD212



Mosaic Nimbus
QN287



Quarry Greige
QG229



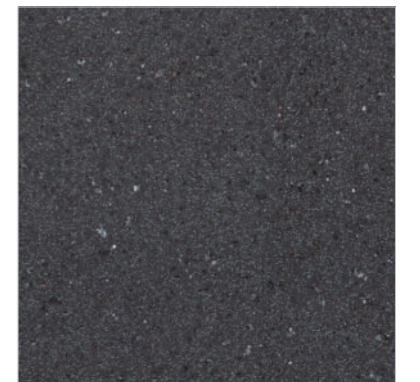
Mosaic Dalmatian



Quarry Oyster
TO310



Quarry Ridge
QR278



Quarry Starred(N)
QS288

Ultra-Hygienic Material Solution for Healthcare




evermoin

The healthiest choice for your design

evermoin® Ultra-Hygienic material/surface from staron® can be applied to almost any interior space within a healthcare facility. Imagine casework, work-stations and wall-cladding in a functional and renewable material that is durable as well as ultra-hygienic.

Achieve the perfect blend of simplicity in design with an ultra-hygienic surface that is engineered for a healthier life.

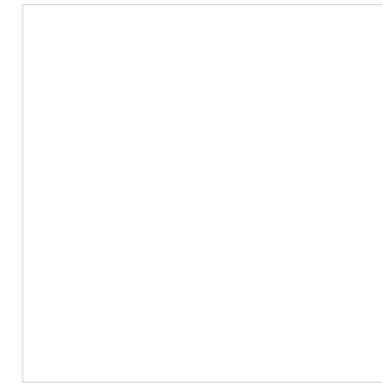
Benefit of evermoin®

 <p>Ultra-Hygienic</p>	 <p>Durability</p>	 <p>Safety</p>
<p>Speedy ultra-hygienic effect and action on representative bacteria and fungi</p>	<p>Excellent Ultra-Hygienic retention and Confirmed quality on stability and durability</p>	<p>Material certification harmless to human body and environment (EPA, NSF, FDA)</p>

Safety Properties

Obtained certification, such as Japan SIAA, US NSF, and FDA, that guarantees sanitary safety and reliability to be harmless to human environments.

Harmless to human body	Safe for food contact
 <p>SIAA Society of International sustaining growth for Ultra-Hygienic Articles</p>	 <p>NSF National Sanitation Foundation</p>



Evermoin Angel White
MA020

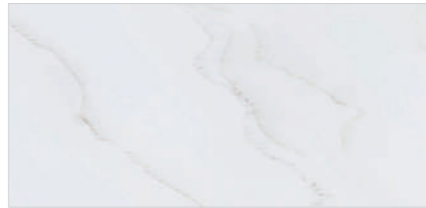


COLORS OF STARON

PREMIERE



Largo VL312



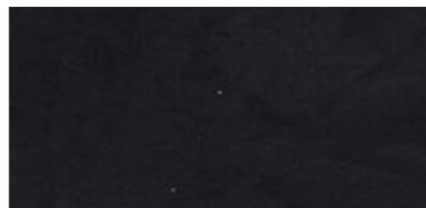
NEW Forte VF315



Legato VL322



NEW Vivace VV375



Gravita VG392

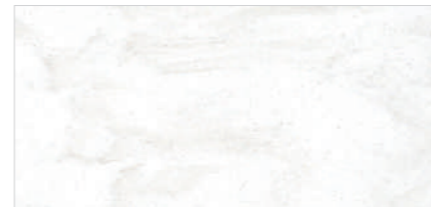
SUPREME



DownyWhite SF100



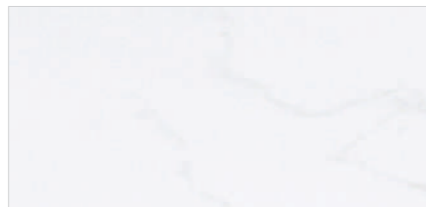
Downy Dove SP105



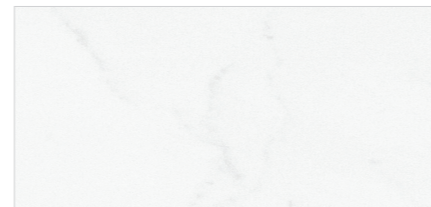
Downy Cream VC343



Downy Grey VG321



Cotton White VC110



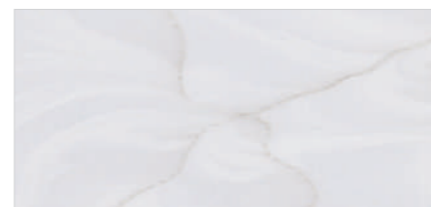
Morning Sky VM114



Delphi VD111



Arctic White VA311



Rotor Cloud VR322



SUPREME



Snowfall VS324



Latte Cream VL343



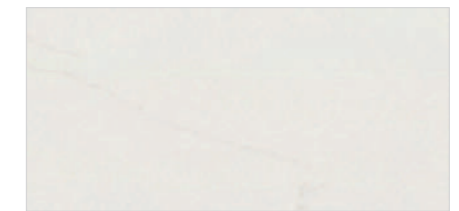
Flux VF113



Reno VR184



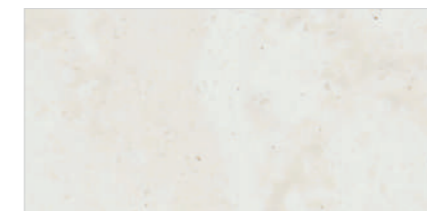
Ocean View VO171



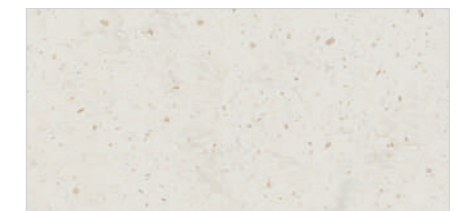
Beige Granite VB172



Cloudbank VC118



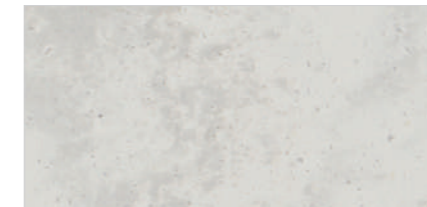
Magnolia VM143



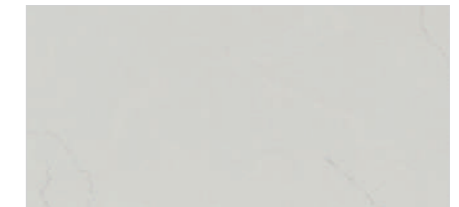
Natural Bridge VN144



Dandelion VD175



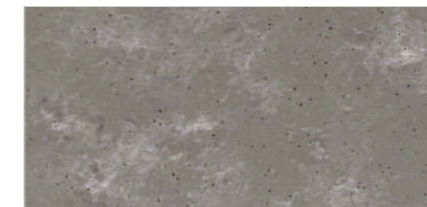
Dawn VD126



Urban Grey VU127



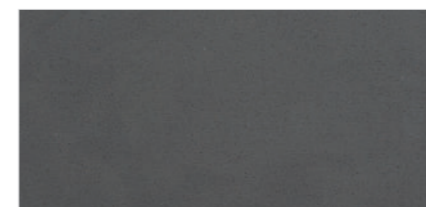
Ash Concrete VA129



Ashfall VA381



Loam VL155

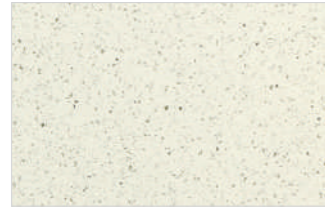


Grigio Concrete VG180

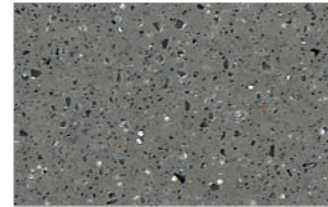
TEMPEST STELLA



Vela FV126



Lyra FL175

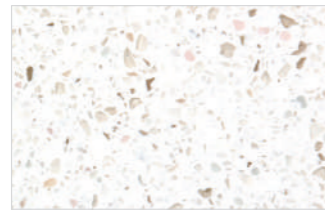


Grus FG188

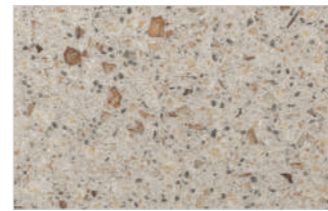
TEMPEST



Coconut FC112



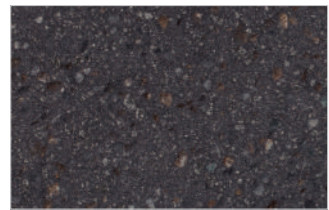
Confection FC116



Glimmer FG144



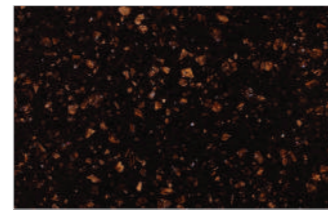
Horizon FH114



Igneous F1187

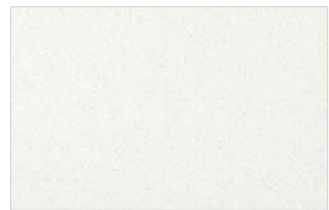


Peak FP100

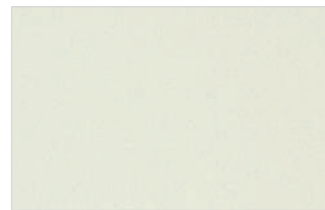


Radiance (Shimmer)
FR148

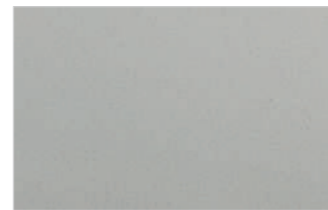
ECLIPSE



Eclipse White SW412

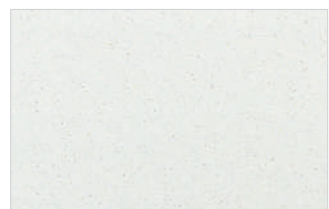


Eclipse Cream SC444



Eclipse Luna SL477

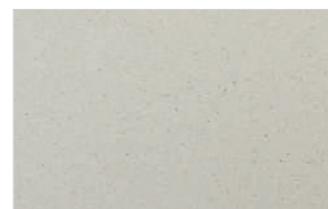
STUCCO



Stucco Cotton NC912

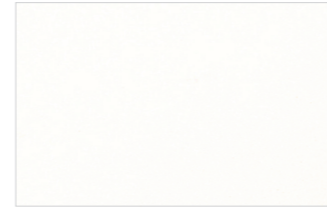


Stucco Angora NA972



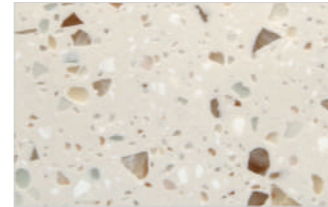
Stucco Earth NE945

METALLIC

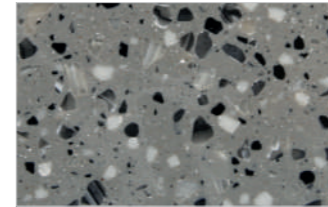


Metallic Yukon
EY510

TERRAZZO



Terrazzo Bologna
NT970



Terrazzo Torino
NT981

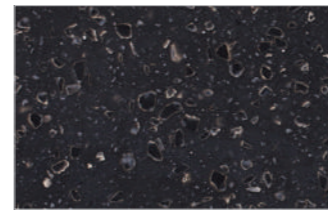


Terrazzo Venezia
NT150

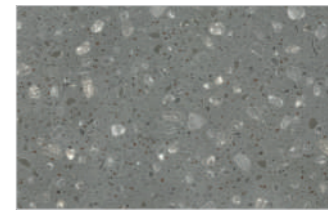
MOSAIC



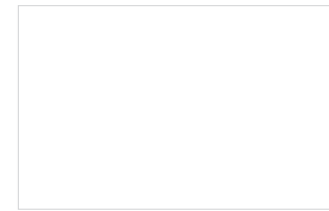
Mosaic Dalmatian
QD212



Mosaic Nimbus
QN287



Collina Urbanity
PU886



Evermoin Angel White 🛡️
MAO20

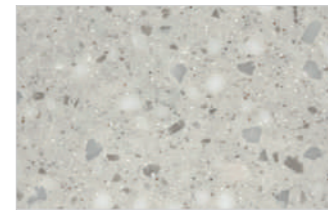
QUARRY



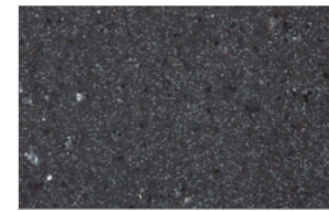
Quarry Oyster TO310



Quarry Ridge QR278

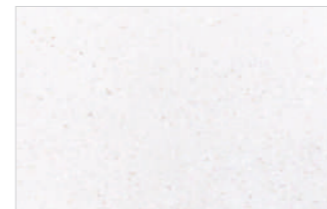


Quarry Greige QG229

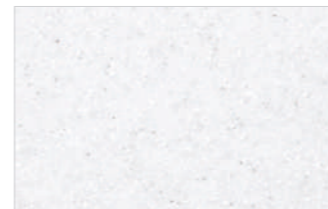


Quarry Starred (N) QS288

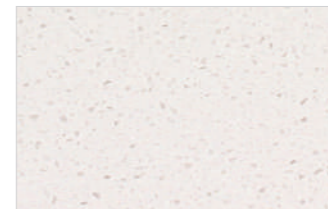
ASPEN



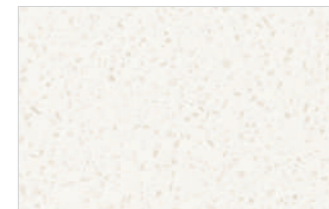
Aspen Eggshell AE642



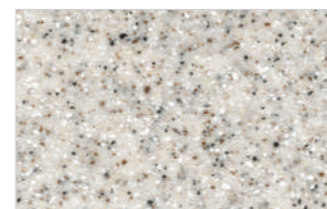
Aspen Snow AS610 🌿



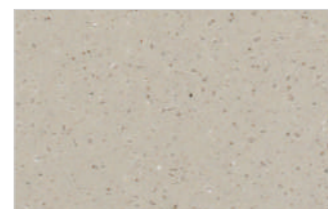
Aspen Alder AA625



Aspen Lily AL645



Aspen Pepper AP640



Aspen Cliff AC652



Aspen Concrete AC629



Aspen Brown AB632

PEBBLE



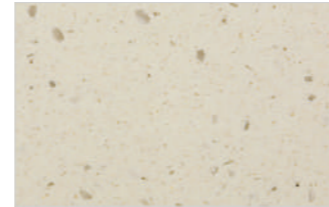
Pebble Frost
PF812



Pebble Swan
PS813



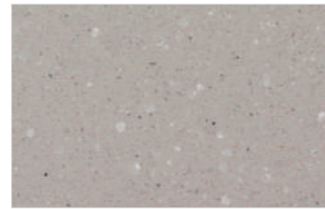
Pebble Saratoga
PS820



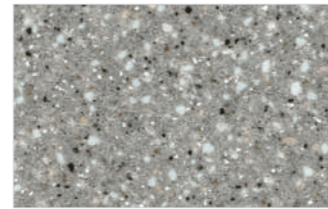
Pebble Chiffon
PC842



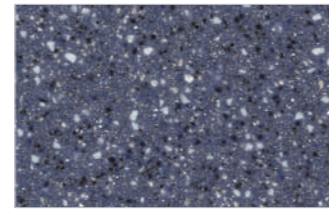
Pebble TeaRose
PT845



Pebble Boulder
PB852



Pebble Grey
PG810

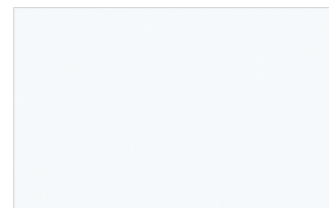


Pebble Blue
PB870

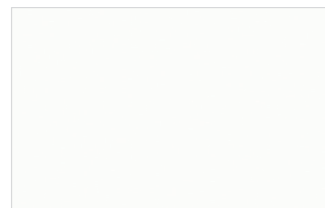


Pebble Gold
PG840

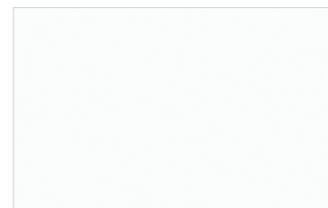
SOLID



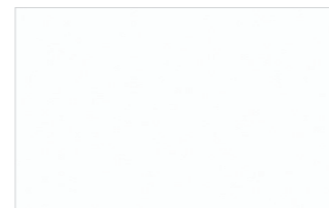
Quasar White
SQ019



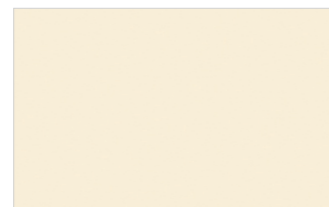
Pure white
SP016



Bright White
BW010



Pearl
SP011



Ivory
SI040



Forest
SF061

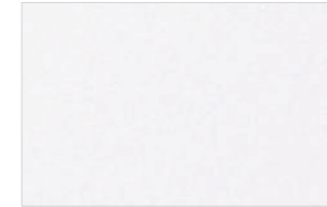


Ultramarine
SU067



Piano Black
GP790

SANDED



Sanded Icicle
SI414



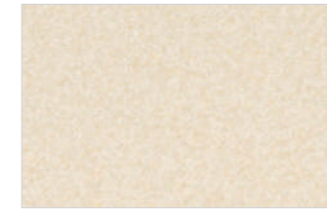
Sanded Cream
SM421



Sanded Linen
SL443



Sanded Birch
SB412



Sanded Cornmeal
SC433



Sanded Sahara
SS440



Sanded Gold Dust
SG441



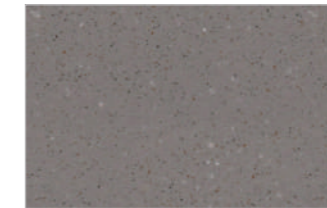
Sanded Vermillion
SV430



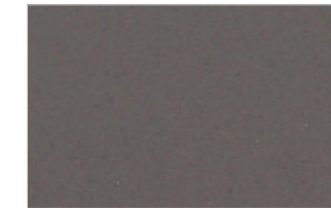
Sanded White Pepper
WP410



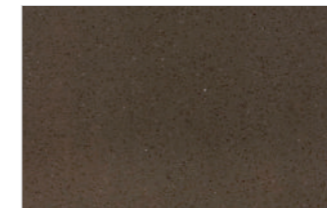
Sanded Grey
SG420



Sanded Tundra
ST482



Sanded Taupe
ST486



Sanded Chestnut
SC457



Sanded Mocha
SM453



Sanded Onyx
SO423

Eco-Friendly Materials, Staron

Printed representation of colors may vary from actual samples. Please review actual sample prior to selection.

• To view new colors in greater detail, please visit www.staron.com

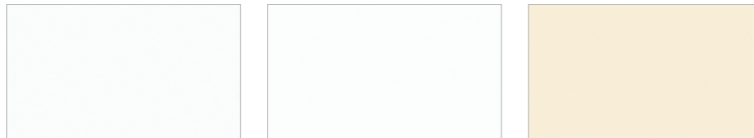
Translucent Ultra-Hygienic Exterior Material Eco-Friendly



SINKS & BOWLS

Staron solid surface sinks and bowls can be installed together with the all-acrylic sheet to achieve a seamless appearance and more smooth and polished fit. The continuous transition from sink to surface leaves no seams for bacteria or mold to accumulate and grow, making Staron's non-porous solid surfaces as the most desirable choice for hygienic interior commercial applications. Staron sinks come in five following colors in sixteen popular models:

COLOR OPTIONS

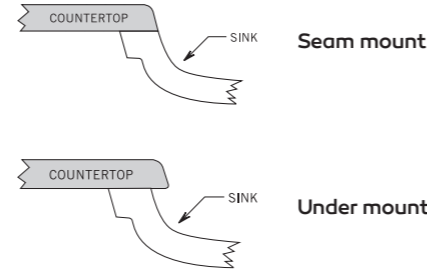


Bright White BW010 **Pearl** SPO11 **Ivory** SIO40



Pure white SPO16 **Quasar White** SQ019

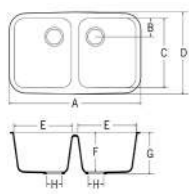
MOUNTING OPTIONS



LAVATORY SINKS / BASINS

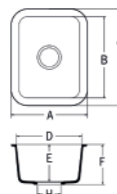
KITCHEN / UTILITY SINKS

A2311



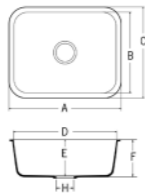
- A 31.25in (794mm)
- B 4.33in (110mm)
- C 16.57in (421mm)
- D 18.93in (481mm)
- E 13.70in (348mm)
- F 9.25in (235mm)
- G 9.84in (250mm)
- H 3.54in (90mm)

A1121



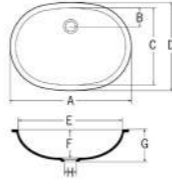
- A 12.83in (326mm)
- B 14.01in (356mm)
- C 16.37in (416mm)
- D 10.47in (266mm)
- E 6.49in (165mm)
- F 7.08in (180mm)
- H 3.54in (90mm)

A1231



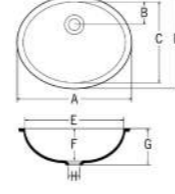
- A 23.30in (592mm)
- B 16.61in (422mm)
- C 18.97in (482mm)
- D 20.94in (532mm)
- E 7.36in (187mm)
- F 7.95in (202mm)
- H 3.54in (90mm)

A3211



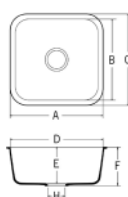
- A 21.57in (548mm)
- B 3.38in (86mm)
- C 14.01in (356mm)
- D 15.59in (396mm)
- E 20.00in (508mm)
- F 6.14in (156mm)
- G 6.81in (173mm)
- H 1.77in (45mm)

A3181



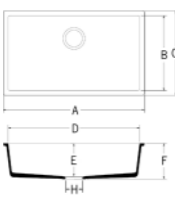
- A 18.18in (462mm)
- B 3.70in (94mm)
- C 13.22in (336mm)
- D 14.80in (376mm)
- E 16.61in (422mm)
- F 5.47in (139mm)
- G 6.14in (156mm)
- H 1.77in (45mm)

A1181



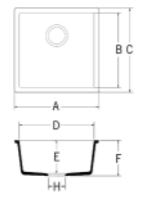
- A 18.11in (460mm)
- B 15.75in (400mm)
- C 18.11in (460mm)
- D 15.75in (400mm)
- E 8.18in (208mm)
- F 8.85in (225mm)
- H 3.54in (90mm)

B3290



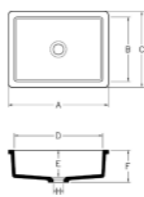
- A 29.52in (750mm)
- B 15.75in (400mm)
- C 17.64in (450mm)
- D 27.48in (700mm)
- E 7.28in (185mm)
- F 7.87in (200mm)
- H 3.54in (90mm)

B3180



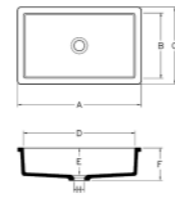
- A 17.67in (450mm)
- B 15.75in (400mm)
- C 17.67in (450mm)
- D 15.75in (400mm)
- E 6.89in (175mm)
- F 7.48in (190mm)
- H 3.54in (90mm)

B3150



- A 16.81in (427mm)
- B 10.94in (278mm)
- C 12.87in (327mm)
- D 14.88in (378mm)
- E 4.57in (116mm)
- F 5.43in (138mm)
- H 1.77in (45mm)

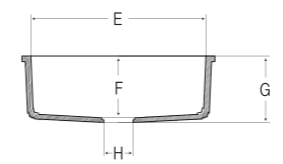
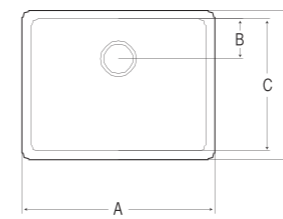
B3190



- A 20.63in (524mm)
- B 10.79in (274mm)
- C 12.87in (327mm)
- D 18.66in (474mm)
- E 4.57in (116mm)
- F 5.43in (138mm)
- H 1.77in (45mm)

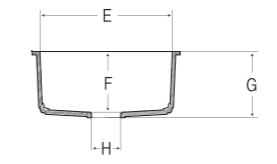
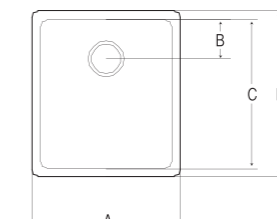
NEW

B1212



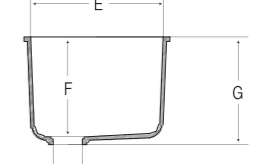
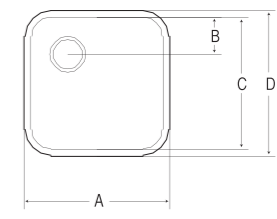
- A 22.87in (581mm)
- B 4.8in (122mm)
- C 15.74in (400mm)
- D 17.75in (451mm)
- E 20.86in (530mm)
- F 7.28in (185mm)
- G 7.87in (200mm)
- H 3.54in (90mm)

B1177



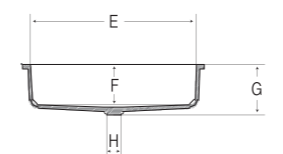
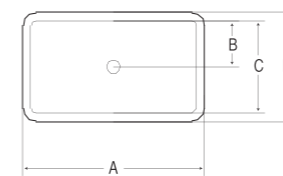
- A 17.71in (450mm)
- B 4.72in (120mm)
- C 17.71in (450mm)
- D 19.68in (500mm)
- E 15.74in (400mm)
- F 7.28in (185mm)
- G 7.87in (200mm)
- H 3.54in (90mm)

B1160



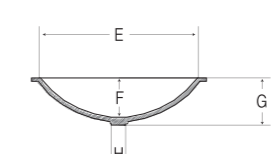
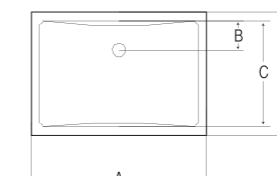
- A 17.32in (440mm)
- B 4.4in (112mm)
- C 15.74in (400mm)
- D 17.32in (440mm)
- E 15.74in (400mm)
- F 11.81in (300mm)
- G 12.79in (325mm)
- H 3.54in (90mm)

B3200



- A 21.65in (550mm)
- B 5.51in (140mm)
- C 11.02in (280mm)
- D 12.99in (330mm)
- E 19.68in (500mm)
- F 4.72in (120mm)
- G 5.51in (140mm)
- H 1.73in (44mm)

B3192



- A 20.86in (530mm)
- B 3.5in (89mm)
- C 12.59in (320mm)
- D 14.56in (370mm)
- E 18.89in (480mm)
- F 4.76in (121mm)
- G 5.55in (141mm)
- H 1.73in (44mm)

PERFORMANCE PROPERTIES

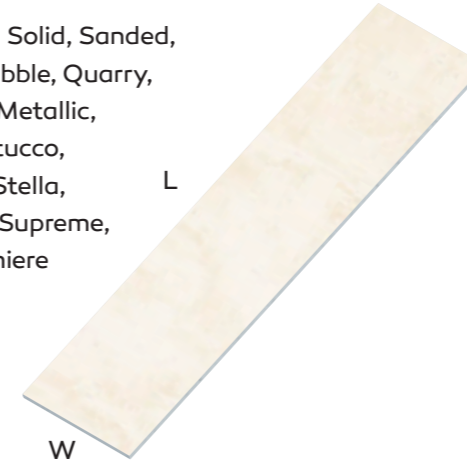
The information contained herein is provided by LOTTE CHEMICAL Co., Ltd. and subsidiaries and affiliates for information purposes only and should be used by individuals with technical experience and knowledge in the area. LOTTE CHEMICAL does not make any representation or warranties of the usefulness or expected result of the information, and does not assume any responsibility whatsoever related to the use of the information. Exclusion of the implied warranties may not apply in certain jurisdictions.

PROPERTY	TEST RESULT	TEST PROCEDURE
Tensile strength	6,000 psi	ASTM D 638
Tensile modulus	600,000 psi	ASTM D 638
Flexural strength	10,000 psi	ASTM D 790
Flexural modulus	1,000,000 psi	ASTM D 790
Elongation	0.5%	ASTM D 638
Hardness	92 Rockwell "M" Scale 65 Barcol impressor	ASTM D 785 ASTM D 2583
Thermal expansion	2.0x10 ⁻⁵ in/in F°	ASTM D 696
Gloss (60 Gardner)	Between 5-20	NEMA LD-3
Color stability	No change-200hrs	NEMA LD-3
Stain resistance	Passed Rating 41	ANSIZ 124
Abrasion resistance	Passed	ANSIZ 124
Boiling water surface resistance	No effect	NEMA LD-3
High temperature resistance	No effect	NEMA LD-3
IZON Impact resistance (Notched)	0.28ft. lbf/in	ASTM D 256
Ball drop 1/2" (12 mm) sheet	144"w/1/2lb ball No failure	NEMA LD-3
Fungi and Bacterial resistance	No growth	ASTM G 21, G22
Specific gravity Solid colors Patterened colors	1.72 1.69	ASTM D 792
Water absorption	0.04%, (1/2", 24hrs) 0.11%, (1/8", 24hrs)	ASTM D 570
Flammability Flame spread Smoke density	Class A/Class 1 10 10	UBC 8-1 ASTM E 84 ASTM E 84
Radiant heat resistance	No visual effect	NEMA LD-3
Toxicity	84.4g (Solid color) 81.8g (Patterened color)	Pittsburgh test protocol (LC50 Test)

PRODUCT DIMENSIONS

COLLECTION

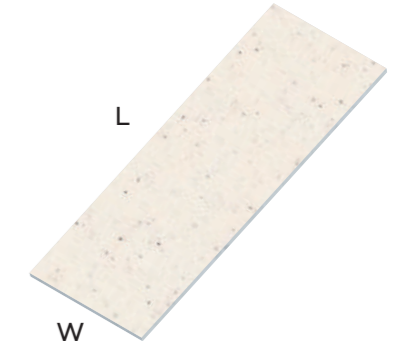
Evermoin, Solid, Sanded,
Aspen, Pebble, Quarry,
Terrazzo, Metallic,
Eclipse, Stucco,
Tempest Stella,
Tempest, Supreme,
Aria, Premiere



THICKNESS	WIDTH	LENGTH
mm	mm	mm
12 (1/2")	760 (30")	3,680 (145")

COLLECTION

Solid, Sanded,
Stucco, Eclipse,
Aspen, Metallic



THICKNESS	WIDTH	LENGTH
mm	mm	mm
6 (1/4")	760 (30")	2,500 (98")

- Bright White with wider widths is available. Widths of 1350mm and 930mm with the thickness of 6mm, 9mm and 12mm are available.
- Panel thicknesses of 9mm and 19mm available on request.
- 6mm thickness sheet is not recommended for horizontal application.
- If there is a specific dimension or size that is required for a particular project, please consult with the local agent or distributor.

STARON® 10-YEAR LIMITED WARRANTY

The 10-year warranty applies to Staron, Tempest and Supreme Collection products that have been installed in an interior, commercial-use or residential application.

For more details, please consult with your Staron products distributor, or visit www.staron.com

DISCLAIMER

The information contained herein is provided by LOTTE CHEMICAL Co., Ltd. for information purposes only and should be used by individuals with technical experience and knowledge in the area. LOTTE CHEMICAL Co., Ltd. does not make any representation or warranties of the usefulness or expected result of the information, and does not assume any responsibility whatsoever related to the use of the information. Exclusion of the implied warranties may not apply in certain jurisdictions.