

A modern interior space featuring a large glass wall on the left, a red curved reception desk in the center, and a dark, textured wall on the right. The ceiling is dark with recessed lights. The floor is made of light-colored tiles.

ATi
DECORATIVE
LAMINATES

NUMETALTM

HIGH PRESSURE LAMINATES WITH
A REAL METAL SURFACE

COMMERCIAL
HEALTHCARE + INSTITUTIONAL
HOSPITALITY
RETAIL



FRONT COVER: ANTIQUE PEWTER REEDS - 490PTK / BACK COVER: BRUSHED STAINLESS METALGRAIN - 256 SEL



DISCOVER NUMETAL

ATI DISTRIBUTES NUMETAL TO COMMERCIAL,
HEALTHCARE + INSTITUTIONAL, HOSPITALITY
AND RETAIL ARCHITECTURAL AND
INTERIOR DESIGN MARKETS.

DISCOVER MORE PRODUCTS FROM ATI AT
WWW.ATILAMINATES.COM

4 - WHAT IS NUMETAL?

6 - KOURY CORPORATION: A CASE STUDY

8 - OUR JOURNEY TOWARD SUSTAINABILITY

10 - GREEN VALLEY GRILL: A CASE STUDY

12 - NUMETAL DESIGN COLLECTION

18 - AIRSTREAM: A CASE STUDY

20 - APPLICATIONS

24 - TERMINOLOGY, TECHNOLOGY, & FAQs

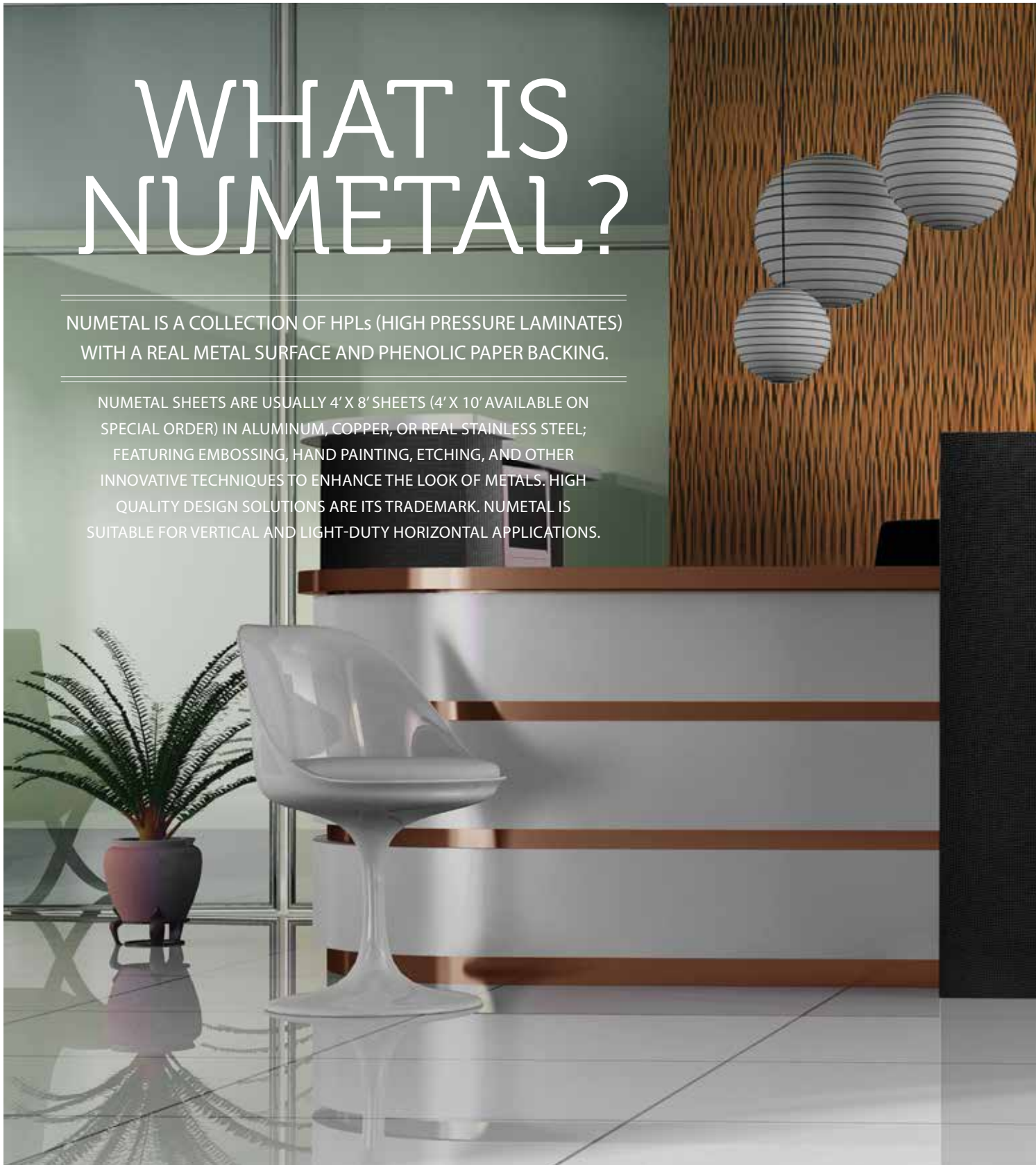
26 - HOW TO SPECIFY AN ORDER

27 - QUICK REFERENCE GUIDE

WHAT IS NUMETAL?

NUMETAL IS A COLLECTION OF HPLs (HIGH PRESSURE LAMINATES) WITH A REAL METAL SURFACE AND PHENOLIC PAPER BACKING.

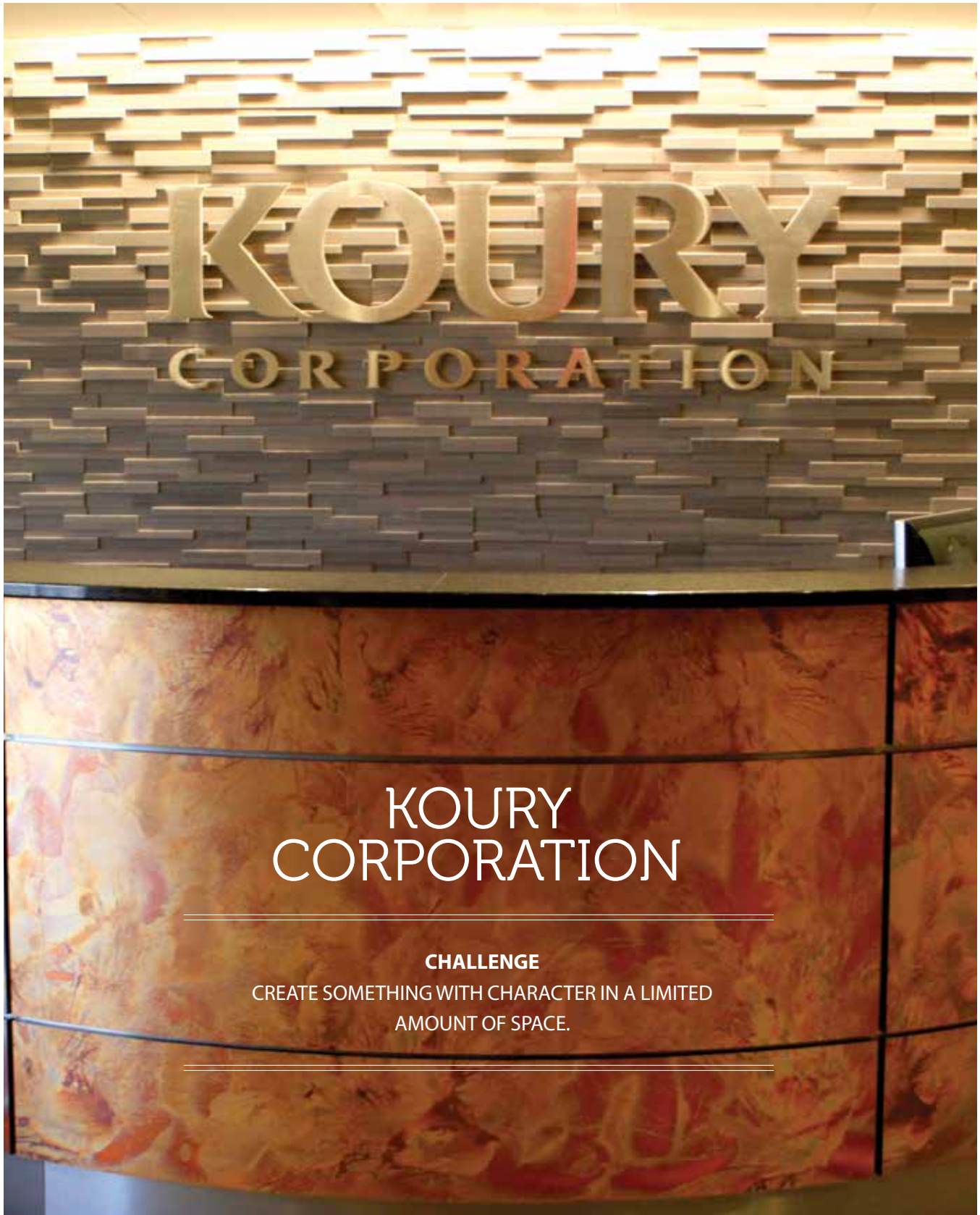
NUMETAL SHEETS ARE USUALLY 4' X 8' SHEETS (4' X 10' AVAILABLE ON SPECIAL ORDER) IN ALUMINUM, COPPER, OR REAL STAINLESS STEEL; FEATURING EMBOSSING, HAND PAINTING, ETCHING, AND OTHER INNOVATIVE TECHNIQUES TO ENHANCE THE LOOK OF METALS. HIGH QUALITY DESIGN SOLUTIONS ARE ITS TRADEMARK. NUMETAL IS SUITABLE FOR VERTICAL AND LIGHT-DUTY HORIZONTAL APPLICATIONS.



NUMETAL



DETAIL VIEW



KOURY CORPORATION

CHALLENGE

CREATE SOMETHING WITH CHARACTER IN A LIMITED
AMOUNT OF SPACE.

CASE STUDY

BACKGROUND

The Koury Corporation, one of the largest, privately owned, builder/developer companies located in Greensboro, NC, recently relocated their headquarters and decided to give their lobby a fresh new look. They turned to ATI Decorative Laminates' NuMetal product line for their product of choice.

The reason? Several actually. As Koury Corporation's interior designer Susan Boswell stated, "When Koury Corporation relocated their offices, they wanted to modernize their look." So, Boswell went with ATI's NuMetal line of hand-painted copper laminates. She selected NuMetal C412 Patina Onyx to beautifully wrap the lobby's reception desk.

CHALLENGE

"Because Koury is a construction company, we wanted to use materials that showcased craftsmanship, but needed the product to be easy to install as well," said Boswell of her choice in material and design.

Boswell faced the challenge of limited space for this reception desk, so the curved desk is not only smartly designed, but it also looks great and adds character to the space. NuMetal can easily wrap around curved surfaces and columns, making it a perfect candidate for this installation. Boswell used NuMetal C412 Patina from the Unique Art collection to create a simple desk, but one that feels and looks like a work of art.

SOLUTION

"It took about 2 to 3 weeks from the time we decided on the material, the POs, receiving it and later installing it," said Boswell.

The product has been installed for over 2 months now and Boswell boasted that they have had no issues with durability.

When asked if there was anything that ATI could have done better, Boswell couldn't think of a thing. She loves working with ATI's Southern Regional Sales Manger, Lee Averett. Boswell beamed at the question saying, "Lee was great to work with. He brought many samples for us to look at and choose from. We always get the best service!"

THE DETAILS

DESIGNER
SUSAN BOSWELL

SALES REP
LEE AVERETT



UNIQUE ART PATINA ONYX - C412



OUR JOURNEY TOWARD SUSTAINABILITY

AS A 38-YEAR-OLD BRAND, WE UNDERSTAND
SUSTAINABILITY IS A JOURNEY OF ONGOING
IMPROVEMENT AND INNOVATION.

SUSTAINABILITY



As an ISO 14001 Certified Company, we are committed to continual improvement through our life-cycle approach to manufacturing and quality product design. From our selection of raw materials and maximization of material yields through our manufacturing processes and end-of-life management strategies, ATI serves the demands of today's customer while preparing for tomorrow.

We are investigating alternate methods of minimizing our off-fall through "waste-to-profit" networking where our manufacturing waste becomes material for another product.

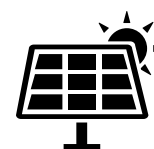
Our commitments don't end at the door. We understand that our supply chain partners are part of our environmental footprint. We are working with our suppliers to reclaim their materials that go into our final product assembly – further minimizing the manufacturing waste that ends up in a landfill.

Most NuMetal laminates are available for special order, in 100% rapidly renewable, pre-consumer materials that are phenol-free and have formaldehyde emissions of less than 0.01 PPM – one of the lowest in the industry. The core is made of 100% biological secondary components obtained from renewable resources and is fully recyclable.

Through a third party, Development and Test Laboratory for Wood Technology (EPH) in the Institute for Wood Technology in Germany, this product was analyzed and certified according to (EN DIN 717/1) the emission thresholds of CARB's Airborne Toxic Control Measure (ATCM) Phase 1 and 2 for HWPW, PB and MD.



38 YEAR
ANNIVERSARY



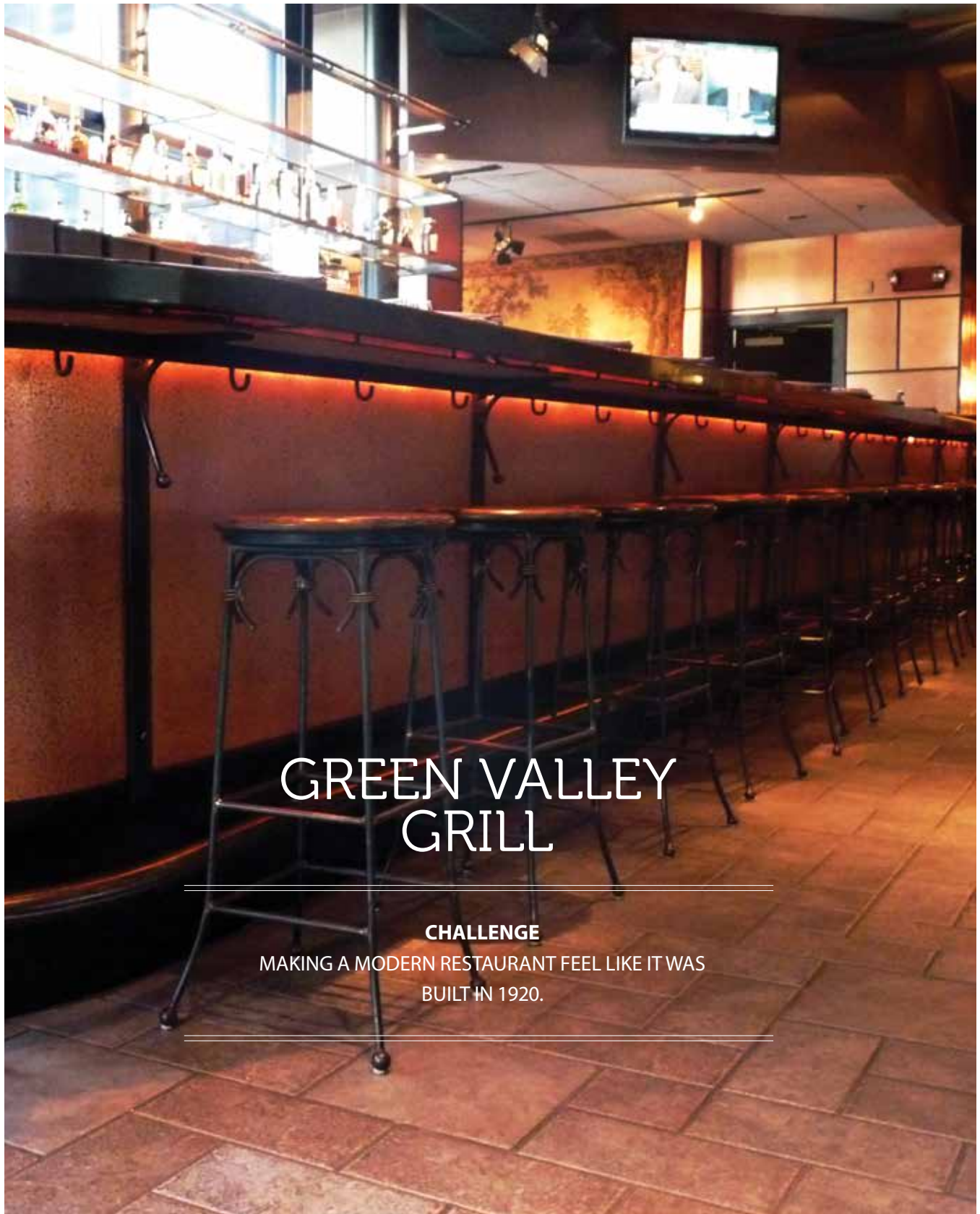
2015 SOLAR
MANUFACTURING
OFFSET INITIATIVE

ISO

9001:2008/14001
CERTIFIED

LEED

CREDITS
AVAILABLE



GREEN VALLEY GRILL

CHALLENGE

MAKING A MODERN RESTAURANT FEEL LIKE IT WAS
BUILT IN 1920.

CASE STUDY

THE DETAILS

DESIGNERS

DON RIVES AND
DENNIS QUAINANCE

PRODUCTS

NUMETAL C462
ANTIQUE FINE
HAMMERED COPPER
AND C431 ANTIQUE
COPPER ORE

INSTALLATION YEAR

1998



THE FORMULA *ANTIQUÉ COPPER ORE - C431*

BACKGROUND

In the heart of Greensboro, North Carolina, lies a pearl of a hotel known as the O. Henry, and its equally charming restaurant, the Green Valley Grill. Unless you're a local, you would never guess that this charming and luxuriously accommodating hotel and restaurant is only 16 years old. One would think that both structures have been standing in this location for more than 100 years. But according to CEO Dennis Quaintance, that is not the case.

In 1998 Quaintance was directly involved in the design of Green Valley Grill along with his late colleague, Don Rives. They wanted the restaurant design to echo warmth and welcome. "We wanted to leave the impression that you are not dining in something new, but rather something ancient," said Quaintance about the initial design concepts. "There is something, a psychological effect, kind of like going home. It's a safe space; it's a comfort place." They went with brick and copper as their staple materials because they felt that, "brick and copper are things that people have lived next to for quite a while."

CHALLENGE

Originally, Quaintance and Rives wanted the hotel to look like it was built in 1870 and the restaurant to feel like a 1920s addition. What many folks don't know is that both structures were actually constructed in 1998. When this design duo decided on copper, Quaintance contacted his friends at ATI Decorative Laminates, because he was sure if anyone knew laminates and copper, it would be Jim Burgio, ATI's CEO.

"We went with laminate because it's so durable. It's been 16 years since installation and it's held up great," said Quaintance. "And I'll bet you dollars-to-donuts if you came back in 16 years you'll see these exact same walls. Because materials either wear out or ugly out, and this isn't going to do either one."

SOLUTION

Both copper and brick have endured for ages, and those materials helped the design team achieve a historic mood. They applied ATI's C431 Antique Copper Ore in a portion of the restaurant informally referred to as "the Copper Room," and wrapped their large bar with C462 Antique Fine Hammered Copper. Both materials are from the NuMetal Copper Collection, which gives the space old-world charm with the durability of modern materials.

Originally, the Copper Room's installation did not have metal joiners, but a couple of years after the restaurant's opening there were humidity problems with the restaurant's HVAC system, which made Quaintance and his team slightly alter the design to address the effects of moisture. "We came in and put in these, what we call joint lines. But that was all retrofit, we didn't have to change anything to do it," said Quaintance. Because of the copper laminate's durability, they had the same laminates that wrap the bar (C462 Antique Fine Hammered Copper) installed throughout the restaurant's large kitchen area.



NUMETAL COLLECTION

NUMETAL IS REAL ALUMINUM, COPPER, OR STAINLESS STEEL BACKED WITH A PHENOLIC PAPER BACKING THAT MAKES IT EASY TO WORK WITH.

NUMETAL IS AVAILABLE AS FLAT SHEETS OR WITH A COMBINATION OF EMBOSSEING AND A FINISH. THE ITEMS SHOWN HERE ARE STOCKED. MANY OTHER COMBINATIONS ARE AVAILABLE AS SPECIAL ORDER.

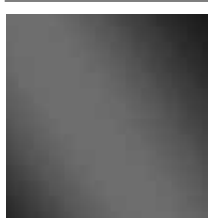
NUMETAL COLLECTION

COLLECTION: ALUMINUM

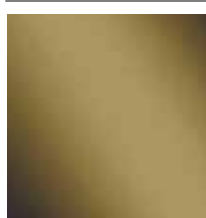
ALL FINISHES ARE AVAILABLE IN FLAT SHEETS OR WITH EMBOSSED DESIGNS ADDED.
MOST FINISHES ARE LACQUERED FOR ABRASION RESISTANCE. THE POLISHED FINISHES ARE ANODIZED.



POLISHED ALUMINUM
904



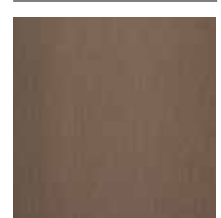
POLISHED SMOKE
1014



POLISHED BRASS
914



BRUSHED STAINLESS
256G



BRUSHED BRONZE
944



BRUSHED BRASS
934



BRUSHED BLUE
258



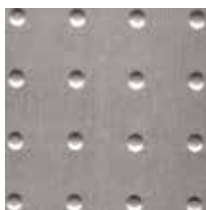
ALUMINUM MILL
204



BRUSHED ALUMINUM
245



*BRUSHED ALUMINUM
FINE HAMMERED*
924 HAM



*BRUSHED ALUMINUM
POINT*
924 PNT



*BRUSHED ALUMINUM
CORRUGATED*
603/924



*BRUSHED STAINLESS
STEEL CORRUGATED*
603/256



*MILL ALUMINUM
CORRUGATED*
603/209



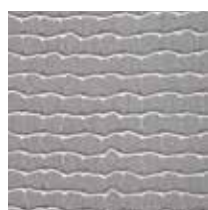
**BRUSHED ALUMINUM
DIAMOND PLATE**
924 GEK



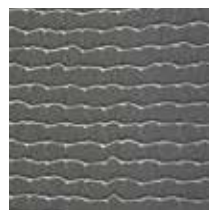
**BRUSHED STAINLESS
DIAMOND PLATE**
256 GEK



ALUMINUM RONDO
202 RON



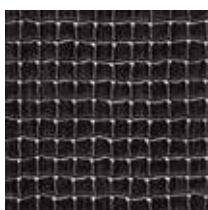
**BRUSHED ALUMINUM
MESH**
924 NTZ



**BRUSHED STAINLESS
MESH**
256 NTZ



BLACK MESH
11 NTZ



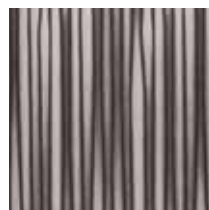
**ANTIQUE PEWTER
MESH**
490 NTZ



**BRUSHED ALUMINUM
REEDS**
924 PTK



**BRUSHED STAINLESS
REEDS**
256 PTK



**ANTIQUE PEWTER
REEDS**
490 PTK



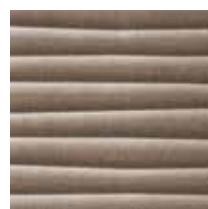
**BRUSHED STAINLESS
METALGRAIN**
256 SEL



**ANTIQUE PEWTER
METALGRAIN**
490 SEL



**BRUSHED ALUMINUM
RIDGES**
924 PGQ



**BRUSHED STAINLESS
RIDGES**
256 PGQ



**BRUSHED STAINLESS
ROOTS**
256 WRZ



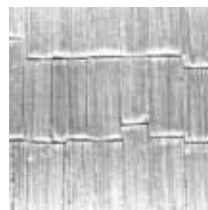
**ANTIQUE PEWTER
ROOTS**
490 WRZ



**BRUSHED STAINLESS
CRATER**
256 DRT



**ANTIQUE PEWTER
CRATER**
490 DRT



**BRUSHED STAINLESS
SHINGLES**
256 SHI



**ANTIQUE PEWTER
SHINGLES**
490 SHI

NUMETAL COLLECTION

COLLECTION: COPPER

COPPER LAMINATES, WITH SELECTED POPULAR EMBOSSED DESIGNS, ARE LACQUERED AND COME WITH CLEAR PROTECTIVE FILM FOR EASE IN PROCESSING.



THE FORMULA *ANTIQUE COPPER ORE - C431*



*COPPER FINE
HAMMERED*
C471



COPPER HAMMERED
C473



MATTE COPPER
C400



*ANTIQUE COPPER
FILIGRAN*
C457



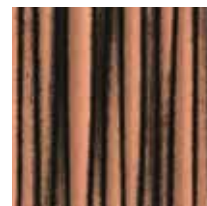
*ANTIQUE COPPER FINE
HAMMERED*
C462



*ANTIQUE COPPER
MESH*
401 NTZ



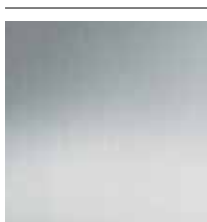
ANTIQUE COPPER ORE
C431



*ANTIQUE COPPER
REEDS*
402 PTK

COLLECTION: REAL STAINLESS STEEL

OUR STAINLESS STEEL COLLECTION IS MADE OF REAL STAINLESS STEEL AND RETAINS ALL THE PROPERTIES OF THE ORIGINAL METAL. IT IS CONSTRUCTED WITH AN ULTRA-THIN LAYER OF STAINLESS STEEL WITH STANDARD HPL BACKING AND ALLOWS REGULAR WOODWORKING TOOLS TO BE USED IN FABRICATION.



BRUSHED STEEL
299 MIC



DIAMOND PLATE
299 GEK



RADIAL
299 ROS



RONDO
299 RON

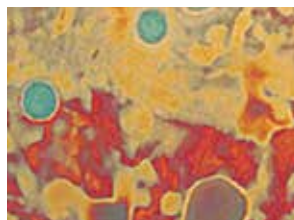
COLLECTION: UNIQUE ART



*PATINA AUTUMN
LEAVES - C421*



PATINA ESMERALDA
C426

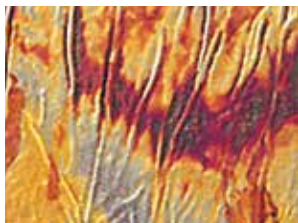


PATINA MALCHIT
C414



PATINA ONYX
C412

NUMETAL COLLECTION



BERLIN
CA1



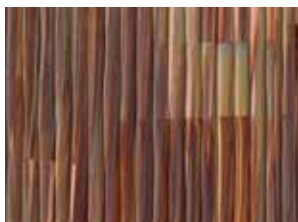
CAIRO
CA2



MADRID
CA5



WASHINGTON
CA27
ART



CAPE COD
CA29



OZ
CA34

AS THEIR NAME IMPLIES, Unique Art Laminates are truly unique work-of-art laminates that offer rich colors and metals in their design. They are hand painted by artists using techniques that allow for repeatability. The artistic value and nuances of hand painting are evident when using multiple sheets. Protected with a high-quality lacquer process to ensure durability, these laminates can be used in both low- and high-traffic areas. Since each sheet is hand painted, it should be noted that slight differences will be seen from sheet to sheet.



AIRSTREAM

THE CHALLENGE

PROVIDE A LOW MAINTENANCE SURFACE THAT FITS WITH THE
STYLE OF AN ICONIC AMERICAN BRAND.

CASE STUDY



BRUSHED ALUMINUM MESH

924 NTZ

DETAILS

64 SQ FEET

IN EVERY "CLASSIC 2015, 2016 & 2017"
TRAILER

3,200 SQ FT

OF MATERIAL PER MONTH

85,000+ SQ FT

SPECIFIED TO DATE

BACKGROUND

In 1929, Wally Byam set out to build a sleek, light-weight travel trailer with all the commodities of home. Some 85 years later, his iconic Airstream trailer remains a symbol of American adventure and discovery.

ATI has worked with Airstream and its team of designers on several occasions, with the company specifying 204 Mil Aluminum sheets in its 2014 Sterling trailer.

CHALLENGE

The year 2015 marked a significant remodel of Airstream's flagship product, the Classic trailer, where they once again called on ATI for interior surface solutions because, as one designer put it, "We know they do some pretty cool things."

SOLUTION

In keeping with Airstream's commitment to light-weight design, they selected the 924 NTZ Brushed Aluminum Mesh as the galley kitchen's backsplash and divider wall. Aluminum laminate is a perfect match because of its flexibility and ease of use. Airstream previously used 204 Mil Aluminum as the finishing laminate for the kitchen divider walls.

ATI's level of service, brand equity and product integrity, as well as their reliability, are just some of the reasons Airstream continues to call upon the family-owned laminate manufacturer, based in Greensboro, NC.

Just like the Classic, NuMetal is designed for long-term adventures.





APPLICATIONS

THE MAJORITY OF ATI'S PRODUCTS ARE CREATED FOR COMMERCIAL SPACES WHERE DURABILITY OF DESIGN REIGNS SUPREME. WE'RE EXPERTS IN SURFACES THAT REMAIN ABRASION RESISTANT. IN ADDITION TO PERFORMANCE, OUR PRODUCTS MEET SAFETY AND MATERIAL STANDARDS.

RETAIL
DISPLAY
INTERIOR DESIGN
HOSPITALITY

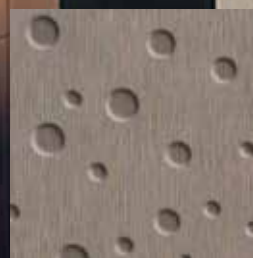
APPLICATIONS



THE FORMULA *BRUSHED ALUMINUM RIDGES 924 PGQ*



THE FORMULA *REAL STAINLESS STEEL - 299 MIC*

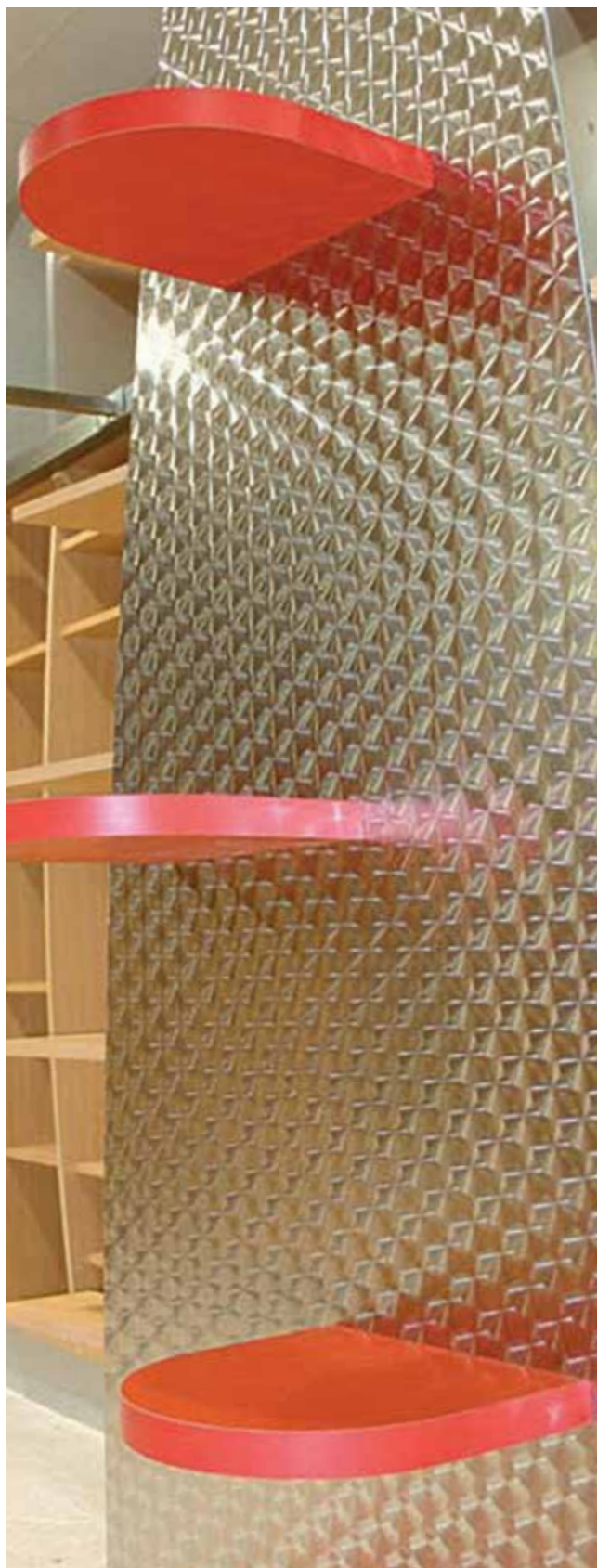


DETAIL VIEW

THE FORMULA *BRUSHED STAINLESS CRATER - 256 DRT*



APPLICATIONS



THE FORMULA ALUMINUM RONDO - 202 RON



THE FORMULA UNIQUE ART PATINA MALCHIT - C414
* LIGHT DUTY HORIZONTAL SURFACE



THE FORMULA BRUSHED STAINLESS DIAMOND PLATE
924 GEK

TERMINOLOGY, TECH & FAQs

REAL STAINLESS STEEL

Our Stainless Steel collection is made of real stainless steel and retains all the properties of the original metal. It is constructed with an ultra-thin layer of stainless steel with standard HPL backing and allows regular woodworking tools to be used in fabrication. We have several styles to choose from in stock.

ALUMINUM COLLECTION

All finishes are available in flat sheets or with embossed designs added. Most finishes are lacquered for chemical and scratch resistance. The polished finishes are anodized.

COPPER COLLECTION

Copper laminates, with selected popular embossed designs, are available from stock. Each 4' x 8' sheet is lacquered and comes with clear protective film for ease in processing.

UNIQUE ART SERIES

The Unique Art series is breaking new ground with stylish interior designs. These unique, work-of-art laminates feature rich colors and metals.

Natural finishing processes make it possible for international artists to decorate these copper panels with a fine layer of delicate ornamental touches and dynamic shapes. They are hand painted by artists using techniques that allow for repeatability; however, it should be noted that slight differences will be seen from sheet to sheet.

THE RESULT: the fulfillment of individual ideas, with each motif in the series a unique work in itself.

FEATURES

- Real metal surfaces
- Non-fading
- Abrasion resistant
- Eco-friendly options available: fully recyclable and CO2 neutral
- Huge variety of metal, nature, and handmade artistic customizations

APPLICATIONS

- Claddings for walls, ceilings, doors, or frames
- Kitchen cabinet inserts and backsplashes
- Point-of-sale displays
- Accent walls
- Furniture
- Store fixtures
- The WOW factor for exhibitions and shows

TERMINOLOGY, TECH & FAQs

WHAT IS NUMETAL?

NuMetal is a collection of High Pressure Laminates with a thin metal surface and phenolic paper backing. These HPLs can be used for interior applications like wallcoverings, wall panels, and ceilings.

DOES ATI STOCK ANY COMMODITY-TYPE HPL'S?

ATI stocks large quantities of commodity Brushed Stainless Steel and Brushed Aluminum sheets as part of our program.

WHAT IS PHENOLIC PAPER BACKING?

Phenolic paper backing is layers of impregnated Kraft paper bonded together.

IS PHENOLIC PAPER BACKED METAL BETTER THAN UNBACKED METAL?

In many ways phenolic paper backed metal is superior to unbacked items. The phenolic paper backing helps protect the laminate from being dented and damaged in shipping and fabricating (it does not make the product totally resistant to damage so the fabricator still needs to take care). Phenolic paper backed metal is also easier on router bits and saw blades so the fabricator should get more life out of these tools using the phenolic paper backed laminate.

WHAT IS THE DIFFERENCE BETWEEN NUMETAL AND OTHER SIMILAR, COMPETITIVE METAL LINES?

The main difference is the choice and variety of items that the NuMetal line offers. Other competitors specialize in standard melamine HPLs whereas we focus solely on the metal market. The phenolic paper backed HPLs are all made the same way and fabricated with the same standard tools. There is more of a difference when compared to some of the unbacked metals. A lot of these items do not have a phenolic paper backing. This makes the items a little more difficult to fabricate and a little harder on fabricators' tools.

HOW CAN NUMETAL BE USED IN MY PROJECT?

NuMetal is recommended for all vertical and light-duty horizontal use. Claddings for walls or ceilings, doors or frames, furniture, light-duty horizontal surfaces, and displays are just a few examples of areas for NuMetal installation.

HOW ABOUT SIZE AND THICKNESS?

Thickness is approximately .035" with the exception of Unique Art and stainless steel, which are .040" thick. Polished aluminum surfaces are anodized. Brushed aluminum and copper surfaces are lacquered. NuMetal sheets are typically 4' x 8' with 4' x 10' sheets available in select designs. See page 29 for additional details.

HOW IS NUMETAL FABRICATED?

NuMetal is fabricated with the same tools used on any high pressure decorative laminate and bonded to the same type of substrates commonly used in the trade. Special care must be taken to avoid denting the surface with tools or scratching the surface with particles of metal. Carbide-tipped blades and bits are recommended. Dull blades will generate heat and scorch metal.

HOW CAN NUMETAL BE SHIPPED?

NuMetal can be shipped via truck, wooden crates, or rolled for courier shipment, depending on the pattern and size of the order. It is recommended that soon after receipt the NuMetal should be removed from the container and stored flat so excessive roll set does not take place.

IS THERE ANY SPECIAL TREATMENT REQUIRED BEFORE OR AFTER FABRICATION TO ENSURE LONGEVITY OF THE PRODUCT?

Anodization produces a hard surface that will not tarnish and has the high abrasion resistance of aluminum. All products are covered with a clear, peel-off mask to protect the finish. This mask should be left on during fabrication to avoid marring the surface.

IS THE LACQUER COMPATIBLE WITH OTHER SYSTEMS?

All brushed NuMetal, Copper, and Unique Art laminates are coated with cellulose-based lacquer. This lacquer is compatible with other lacquer systems, which allows for additional finishing if necessary.

WHAT TYPE OF ADHESIVE IS RECOMMENDED?

Any contact cement or cold-set adhesive normally used with decorative laminates is suitable. Avoid adhesive spreading or setup on metallic surface. **USE ONLY NAPHTHA OR BENZINE IN ADHESIVE CLEANUP** - do not use lacquer solvents or other adhesive solvents, which attack lacquer coatings.

HOW SHOULD NUMETAL BE STORED?

It is important to store the product flat and not on edge, as storing on edge can cause the sheet to bow after some time. Metal laminates should be stored face up in a cool, dry area and in a completely supported flat position. Use a top sheet of chipboard or similar material to hold stored sheets flat.

HOW SHOULD NUMETAL BE CLEANED?

Make sure that the cleaning agent used is compatible with either our anodized or lacquered products prior to use. Clean surfaces with a soft cloth using household cleaner - waxes, Windex-type solutions, or ordinary soap and water. Good furniture or automobile waxes provide additional protection for all metal laminate surfaces.

ARE THERE ANY PRECAUTIONS TO CONSIDER WHEN HANDLING THE PRODUCT?

Metal laminates will conduct electricity and can cause shocks or short circuits when in contact with ungrounded electrical circuits. This product is laminated aluminum, copper, or stainless steel of the highest quality and brilliance. Slight surface imperfections are normal. **PLEASE INSPECT CAREFULLY PRIOR TO USE** to insure the material is suitable for your needs.

IS COUNTER BALANCING NECESSARY?

Counter balancing is necessary as with other High Pressure Laminates to prevent warping of the substrate like wallcoverings, wall panels, ceilings and surfaces.

HOW TO SPECIFY & ORDER

CLIENT SATISFACTION AND QUALITY FOR YOUR DOLLAR ARE THE GOALS WE STRIVE TO ACHIEVE.

WHEN ORDERING PLEASE SPECIFY

1. Pattern Name/Number

(indicate eco friendly, green design if applicable)

2. Color Name/Number

3. Size & Thickness

4. Type of Installation

(i.e.: wall, column, fixtures or specify other)

TECHNICAL SPECIFICATIONS

Please see the Technical Specs on our website at ATILaminates.com/resources

RETURN POLICY

All shipments are to be inspected within 10 working days after delivery. ATI is to be informed in writing of any potential adjustment necessary. If returned undamaged, return of first-quality stocked items subject to a 20% restock fee.

SAMPLES

Due to printer and digital screen limitations, patterns and finishes shown in this catalog may not accurately reflect NuMetal. Request tangible samples to be verified and approved prior to specification and final application. Samples available upon request.

CONDITIONS & WARRANTY

ATI Decorative Laminates warrants to the original consumer purchaser for one (1) year after date of purchase that, under normal use and service, NuMetal products are free from manufacturing defects and conform to published specifications. NuMetal products are intended for primarily interior applications.

ATI Decorative Laminates believes all information contained herein to be correct. It is the responsibility of the fabricator/customer to completely test the adhesives and methods of fabrication to ensure that the results are satisfactory.

The seller's only obligation will be to replace product on a one-to-one basis. Neither the manufacturer nor the seller shall be liable for any additional damage or loss, directly or indirectly, arising as a result of using its products.

Slight imperfections and color variations can occur and are considered normal. Please inspect each product carefully before fabrication to ensure it meets your needs.

ATI is not responsible for any fabrication or ancillary costs involved with using its products.

OTHER ATI PRODUCTS

NuMetal is just one of several products from ATI. Please call or visit our website to see the following:

MIRROFLEX: Deeply textured decorative laminates.

FUSION: A varied assortment of adaptable, durable surfaces fused with custom or stock imagery, allowing you to create your own work of art.

LUMISPLASH: Patent-pending, multilayered, ultra-thin 1/4" (6mm) decorative laminate that emits light evenly across its surface and has impressive impact, scratch, chemical, and abrasion resistant properties.

CUSTOMER SERVICE

800.849.1320

Visit us online at ATILaminates.com for the latest designs and finishes.

ORDERING + QUICK REFERENCE GUIDE

PRODUCT QUICK REFERENCE

COLLECTION	PRODUCT NAME & FINISH	ITEM NUMBER	ROLLABLE FOR SHIPMENT
ALUMINUM	ALUMINUM MILL	204	•
	ALUMINUM RONDO	202 RON	•
	ANTIQUE PEWTER CRATER	490 DRT	•
	ANTIQUE PEWTER MESH	490 NTZ	•
	ANTIQUE PEWTER METALGRAIN	490 SEL	•
	ANTIQUE PEWTER REEDS	490 PTK	•
	ANTIQUE PEWTER ROOTS	490 WRZ	•
	BLACK MESH	11 NTZ	•
	BRUSHED ALUMINUM	245	•
	BRUSHED ALUMINUM CORRUGATED	603/924	•
	BRUSHED ALUMINUM DIAMOND PLATE	924 GEK	•
	BRUSHED ALUMINUM FINE HAMMERED	924 HAM	•
	BRUSHED ALUMINUM MESH	924 NTZ	•
	BRUSHED ALUMINUM POINT	924 PNT	•
	BRUSHED ALUMINUM REEDS	924 PTK	•
	BRUSHED ALUMINUM RIDGES	924 PGQ	•
	BRUSHED BLUE	258	•
	BRUSHED BRASS	934	•
	BRUSHED BRONZE	944	•
	BRUSHED STAINLESS	256 G	•
	BRUSHED STAINLESS CRATER	256 DRT	•
	BRUSHED STAINLESS DIAMOND PLATE	256 GEK	•
	BRUSHED STAINLESS MESH	256 NTZ	•
	BRUSHED STAINLESS METALGRAIN	256 SEL	•
	BRUSHED STAINLESS REEDS	256 PTK	•
	BRUSHED STAINLESS RIDGES	256 PGQ	•
	BRUSHED STAINLESS ROOTS	256 WRZ	•
	BRUSHED STAINLESS STEEL CORRUGATED	603/256	•
	POLISHED ALUMINUM	904	•
	POLISHED BRASS	914	•
	POLISHED SMOKE	1014	•
	MILL ALUMINUM CORRUGATED	603/209	•
COPPER	COPPER FINE HAMMERED	C471	•
	COPPER HAMMERED	C473	•
	MATTE COPPER	C400	•
	ANTIQUE COPPER FILIGRAN	C457	•
	ANTIQUE COPPER FINE HAMMERED	C462	•
	ANTIQUE COPPER MESH	401 NTZ	•
	ANTIQUE COPPER ORE	C431	•
	ANTIQUE COPPER REEDS	402 PTK	•
UNIQUE ART	PATINA AUTUMN LEAVES	C421	•
	PATINA ESMERALDA	C426	•
	PATINA MALCHIT	C414	•
	PATINA ONYX	C412	•
	UNIQUE ART BERLIN	CA1	•
	UNIQUE ART CAIRO	CA2	•
	UNIQUE ART MADRID	CA5	•
	UNIQUE ART WASHINGTON	CA27	•
	UNIQUE ART CAPE COD	CA29	•
REAL STAINLESS	UNIQUE ART OZ	CA34	•
	REAL STAINLESS STEEL BRUSHED STEEL	299 MIC	•
	REAL STAINLESS STEEL DIAMOND PLATE	299 GEK	•
	REAL STAINLESS STEEL RADIAL	299 ROS	•
	REAL STAINLESS STEEL RONDO	299 RON	•

DISCLAIMER. We believe all the information correct. However, we are not fabricators and are merely passing on information received from fabricators who have worked successfully with NuMetal. It is totally the responsibility of the fabricator to completely test the adhesives and methods of fabrication to insure the results are satisfactory for the fabricator's requirements. We are not responsible for any fabrication costs involved with using NuMetal. See our warranty.

***Some NuMetal products are available as 4' x 10' for special orders. Please call for more information.**



Design Beyond the Surface

www.ATILaminates.com/NuMetal

800.849.1320

051.501_01.17